



Better Training for Safer Food BTFSF

**ORGANIZATION OF OFFICIAL CONTROLS,
INCLUDING OF THE PLACING ON THE MARKET
AND IMPORT OF AQUACULTURE ANIMALS**

Giuseppe Bovo

L 8



OVERVIEW

BACKGROUND TO REGULATION 2004/882

PLACING OF AQUACULTURE ANIMALS ON THE MARKET

CONDITIONS FOR IMPORT

SURVEILLANCE PLANS

NATIONAL AND COMMUNITY LABORATORIES



INTRODUCTION

THE ORGANIZATION OF THE OFFICIAL CONTROLS PROVIDED FOR THE DIRECTIVE 2006/88/CE IS BASED ON REGULATION 2004/882 WHICH ESTABLISHES THE GENERAL RULES TO BE CONSIDERED BY SPECIFIC LEGISLATION



BACKGROUND TO REGULATION 2004/882 -1

(5) ANIMAL HEALTH AND ANIMAL WELFARE ARE IMPORTANT FACTORS THAT CONTRIBUTE TO THE QUALITY AND SAFETY OF FOOD.....,

(6) MS MUST ENFORCE FEED AND FOOD LAW AND ANIMAL HEALTH RULES MONITORING TO VERIFY REQUIREMENTS ARE FULFILLED.....

(7) REGULATION 2004/882 PROVIDES A HARMONISED FRAMEWORK OF GENERAL RULES FOR ASSESSING ORGANISATION OF CONTROLS.....

(12) THE OFFICIAL CONTROLS SHOULD BE CARRIED OUT USING APPROPRIATE TECHNIQUES.....



BACKGROUND TO REGULATION 2004/882 -2

(13) THE FREQUENCY OF OFFICIAL CONTROLS SHOULD BE REGULAR AND PROPORTIONATE TO THE RISK.....

(17) LABORATORIES INVOLVED IN THE ANALYSIS OF OFFICIAL SAMPLES SHOULD WORK IN ACCORDANCE WITH INTERNATIONALLY APPROVED PROCEDURES.....

(18) THE DESIGNATION OF COMMUNITY AND NATIONAL REFERENCE LABORATORIES SHOULD CONTRIBUTE TO A HIGH QUALITY AND UNIFORMITY OF ANALYTICAL RESULTS.

(39)SIMILAR OFFICIAL CONTROLS BY THE FVO MAY BE UNDERTAKEN IN THIRD COUNTRIES TO VERIFY COMPLIANCE OR EQUIVALENCY UNDER ARTICLE 46.....

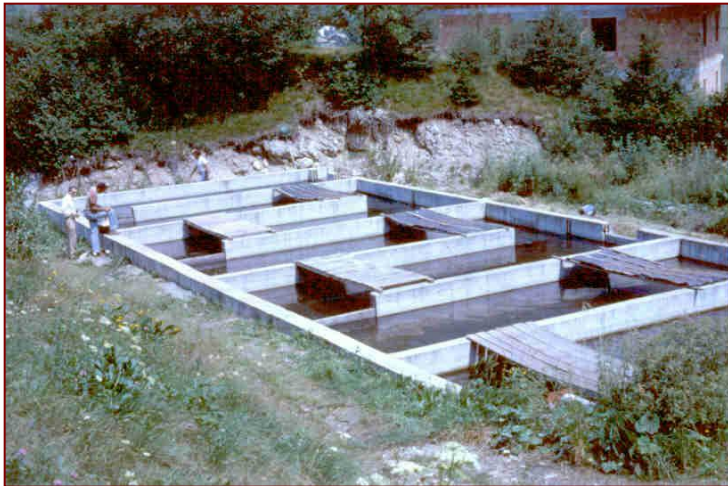
SPECIFIC REQUIREMENTS FOR THE PLACING OF AQUACULTURE ANIMALS ON THE MARKET



DEFINITIONS -1

COMPARTMENT :

one or more farms under a common bio-security system containing an aquatic animal population with a distinct health status with respect to a specific disease, they may be dependent on natural surrounding waters or independent



Compartment independent from natural surrounding waters



Compartment dependent from natural surrounding waters



DEFINITIONS -2

CLOSED ORNAMENTAL FACILITIES :

means pet shops, garden centres, garden ponds, commercial aquaria or wholesalers keeping ornamental aquatic animals without direct contact with natural waters or equipped with an effluent treatment system





DEFINITIONS - 3

CONTINENTAL ZONE :

a precise geographical area with an homogeneous hydrological system comprising:

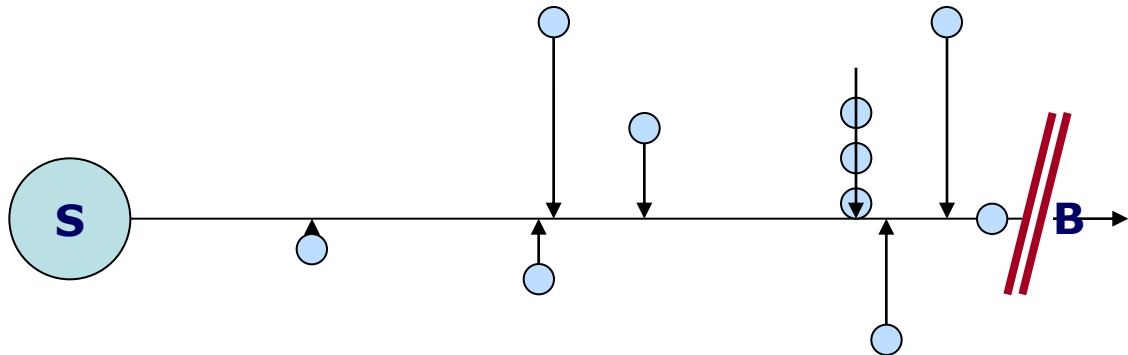
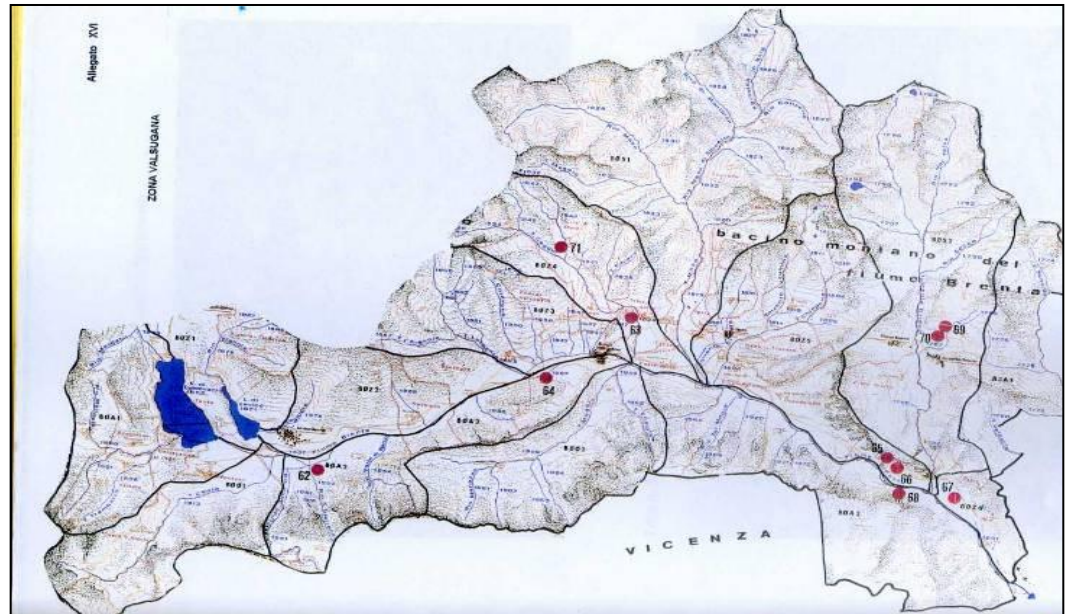
part of a water catchment area from the source(s) to a natural or artificial barrier(b) that prevents the upward migration of aquatic animals from lower stretches of the water catchment area,

or

an entire water catchment area from its source(s) to its estuary

or more

than one water catchment area, including their estuaries, due to the epidemiological link between the catchment areas through the estuary.





DEFINITIONS -4

- species -

SUSCEPTIBLE SPECIES

May develop the diseases .

Lists in Annex IV part II of Directive 2006/88/CE

VECTOR SPECIES

Resistent to the disease but may vehiculate the causative agent .

Lists in Annex I of the regulation 1251/2008/CE .

NOTE : In case of VHS, IHN each species listed may be considered a vector only when they originate or are intended for compartments where susceptible species are present .

NON EXOTIC DISEASES

	DISEASE	SUSCEPTIBLE SPECIES
FISH	VIRAL HAEMORRHAGIC SEPTICAEMIA	Herring (<i>Clupea</i> spp.), whitefish (<i>Coregonus</i> spp.), pike (<i>Esox lucius</i>), haddock (<i>Gadus aeglefinus</i>), Pacific cod (<i>G. macrocephalus</i>), Atlantic cod (<i>G. morhua</i>), Pacific salmon (<i>Oncorhynchus</i> spp.) rainbow trout (<i>O. mykiss</i>), rockling (<i>Onos mustelus</i>), brown trout (<i>Salmo trutta</i>), turbot (<i>Scophthalmus maximus</i>), sprat (<i>Sprattus sprattus</i>) and grayling (<i>Thymallus thymallus</i>)
	INFECTIOUS HAEMATOPOIETIC NECROSIS	Chum salmon (<i>Oncorhynchus keta</i>), coho salmon (<i>O. kisutch</i>), Masou salmon (<i>O. masou</i>), rainbow or steelhead trout (<i>O. mykiss</i>), sockeye salmon (<i>O. nerka</i>), pink salmon (<i>O. rhodurus</i>) chinook salmon (<i>O. tshawytscha</i>), and Atlantic salmon (<i>Salmo salar</i>)
	KOI HERPESVIRUS DISEASE	Common carp (<i>Cyprinus carpio</i>)
	INFECTIOUS SALMON ANEMIA	Rainbow trout (<i>Oncorhynchus mykiss</i>) Atlantic salmon (<i>Salmo salar</i>) brown trout (<i>Salmo trutta</i>).
MOLLUSCHI	Infezione da <i>Marteilia refringens</i>	Ostrica piatta australiana (<i>Ostrea angasi</i>), ostrica cilena (<i>O. chilensis</i>), ostrica piatta europea (<i>O. edulis</i>), ostrica argentina (<i>O. puelchana</i>), mitilo (<i>Mytilus edulis</i>) e mitilo mediterraneo (<i>M. galloprovincialis</i>)
	Infezione da <i>Bonamia ostreae</i>	Ostrica piatta australiana (<i>O. angasi</i>), ostrica cilena (<i>O. chilensis</i>) ostrica di Olympia (<i>O. conchaphila</i>), ostrica asiatica (<i>O. denselammellosa</i>), ostrica piatta europea (<i>O. edulis</i>), e ostrica argentina (<i>O. puelchana</i>).
CROSTACEI	Malattia dei punti bianchi	Tutti i decapodi (Ordine <i>Decapoda</i>).

DISEASE	POTENTIAL VECTOR SPECIES
VHS	<p>Beluga (<i>Huso huso</i>), Danube sturgeon (<i>Acipenser gueldenstaedtii</i>), Sterlet sturgeon (<i>Acipenser ruthenus</i>), Starry sturgeon (<i>Acipenser stellatus</i>), Sturgeon (<i>Acipenser sturio</i>), Siberian Sturgeon (<i>Acipenser Baerii</i>) Bighead carp (<i>Aristichthys nobilis</i>), goldfish (<i>Carassius auratus</i>), Crucian carp (<i>C. carassius</i>), common carp and koi carp (<i>Cyprinus carpio</i>), silver carp (<i>Hypophthalmichthys molitrix</i>), Chubs (<i>Leuciscus</i> spp) Chub (<i>Leuciscus cephalus</i>), Roach (<i>Rutilus rutilus</i>), Rudd (<i>Scardinius erythrophthalmus</i>), tench (<i>Tinca tinca</i>) North African catfish (<i>Clarias gariepinus</i>), Northern pike (<i>Esox lucius</i>) Catfish (<i>Ictalurus</i> spp.), Black bullhead (<i>Ameiurus melas</i>), Channel catfish (<i>Ictalurus punctatus</i>), Pangas catfish (<i>Pangasius pangasius</i>), Pike perch (<i>Sander lucioperca</i>), Wels catfish (<i>Silurus glanis</i>) European seabass (<i>Dicentrarchus labrax</i>), Striped bass (<i>Morone chrysops</i> x <i>M. saxatilis</i>), Flathead grey mullet (<i>Mugil cephalus</i>), Red drum (<i>Sciaenops ocellatus</i>), Meagre (<i>Argyrosomus regius</i>), Shi drum (<i>Umbrina cirrosa</i>), True tunas (<i>Thunnus</i> spp.), Atlantic bluefin tuna (<i>Thunnus thynnus</i>), White Grouper (<i>Epinephelus marginatus</i>), Senegalese solea (<i>Solea senegalensis</i>), Common sole (<i>Solea solea</i>), Common pandora (<i>Pagellus erythrinus</i>), Common dentex (<i>Dentex dentex</i>), Gilthead seabream (<i>Sparus aurata</i>), White seabream (<i>Diplodus sargus</i>), Black spot seabream (<i>Pagellus bogaraveo</i>), Red Sea Bream (<i>Pagrus major</i>), Diplodus diplidus, Sharop snout seabream (<i>Diplodus puntazzo</i>), Common two banded seabream (<i>Diplodus vulgaris</i>), Red porgy (<i>Pagrus pagrus</i>) Tilapia (<i>Oreochromis</i>)</p>

ANIMAL MOVEMENTS COVERED BY THE DIRECTIVE

AQUATIC ANIMAL ORIGINATING FROM	AQUATIC ANIMAL INTENDED FOR
FARM/MOLLUSC FARMING AREA	FARM/MOLLUSC FARMING AREA
	HUMAN CONSUMPTION
	WILD (RESTOCKING)
	COMMERCIAL AQUARIA
WILD	FARM/MOLLUSC FARMING AREA
	COMMERCIAL AQUARIA

ANIMAL MOVEMENTS NOT COVERED BY THE DIRECTIVE

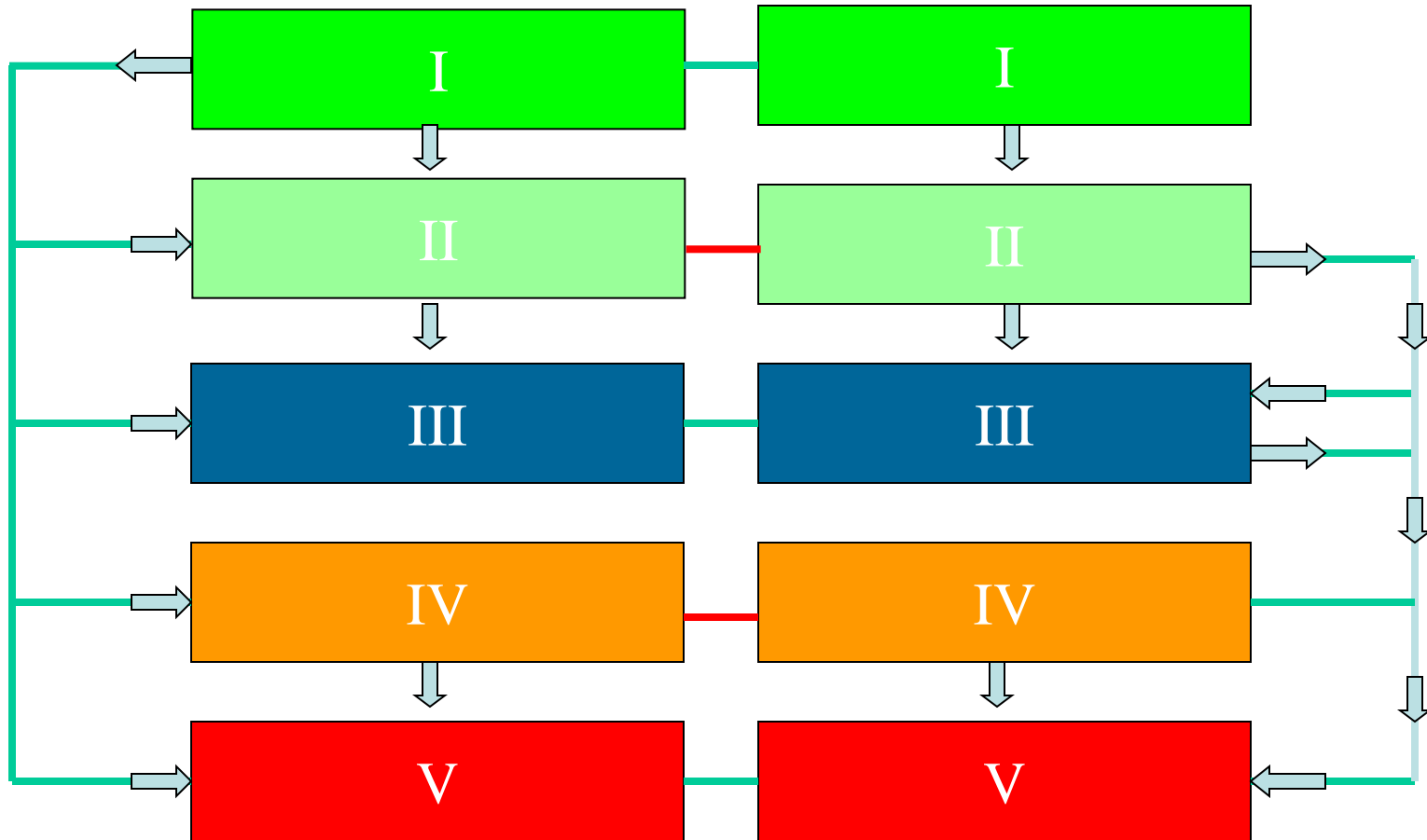
AQUATIC ANIMAL ORIGINATING FROM	AQUATIC ANIMAL INTENDED FOR
WILD*	WILD*
WILD	HUMAN CONSUMPTION (DIRECT ENTRY INTO THE FOOD CHAIN)
	PRODUCTION OF FISH MEAL, FISH FEED, FISH OIL AND SIMILAR PRODUCTS
WILD/FARM/MOLLUSC FARMING AREA	NON-COMMERCIAL AQUARIA

*** EXCEPT IN THE CASE OF DETECTION OF NOTIFIABLE DISEASES (ART. 26 DIRECTIVE)**



European
Commission

PERMITTED MOVEMENTS



CERTIFICATE REQUIREMENT

NEED OF CERTIFICATE FOR DISPATCH OF THE CONSIGNMENT

CATEG. ORIGIN	CATEGORY OF DESTINATION FARM				
	1	2	3	4	5
1	YES	YES	NO	YES	NO
2	na	na	NO	na	NO
3	na	na	NO	na	NO
4	na	na	na	na	YES
5	na	na	na	na	YES

CATEG. DESTIN	CATEGORY OF ORIGIN				
	1	2	3	4	5
1	YES	na	na	na	na
2	YES	na	na	na	na
3	NO	NO	NO	na	na
4	YES	na	na	na	na
5	NO	NO	NO	NO	NO

NEED OF CERTIFICATE FOR INTRODUCING THE CONSIGNMENT



ORNAMENTAL AQUATIC ANIMALS ORIGINATED FROM AND INTENDED FOR ORNAMENTAL FACILITIES (EC reg.1251/2008- Art. 4)



- Ornamental susceptible species
- Originated from an EU MS

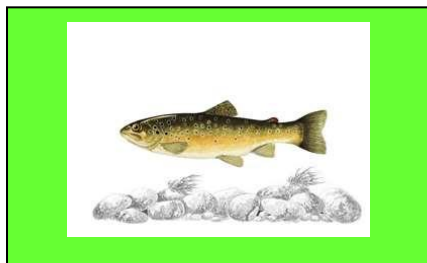
- Closed facilities
- Located in a different EU MS where the whole territory or certain zones/compartments are free or have a surveillance programme for one/more listed diseases

NOTE : ORNAMENTAL AQUATIC ANIMALS KEPT IN CLOSED FACILITIES SHALL NOT BE RELEASED INTO OPEN FARMS/ WILD WITHOUT THE AUTHORIZATION OF CA

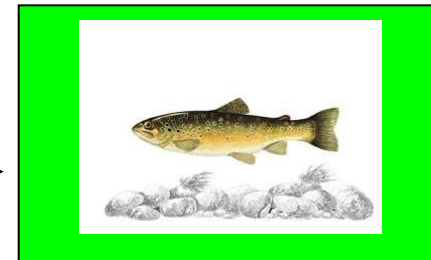
NO NEED FOR TRACES WHEN NOT SUSCEPTIBLE (VECTORS AND INNOCENT SPECIES) ARE MOVED AND WHERE FISH ARE INTENDED FOR NOT-FREE MS /ZONES/COMPARTMENTS or OR WHERE NO SURVEILLANCE/ERADICATION PROGRAMMES ARE IN PLACE



AQUACULTURE ANIMALS INTENDED FOR FARMING, RELAYING AREAS, PUT AND TAKE FISHERIES, OPEN ORNAMENTAL FACILITIES AND RESTOKING (EC reg.1251/2008- Art. 5)



Certif. Part A
Annex II



- Susceptible/vector

- Farming, relaying areas, PT fisheries , open ornamental , restocking

- Located into a MS,zone , compartment declared free for one or more listed diseases or for which a surveillance/eradication applies

NOTE : " INNOCENT" species are not considered
No certification needed when animals are introduced in MS/zone/compartment which are not free for one or more listed diseases to which the introduced species is susceptible/vector or do not have any surveillance programme

PART C: List of species susceptible to diseases for which national measures are approved under Decision 2010/221/EU

Disease	Susceptible species
Spring Viraemia of Carp (SVC)	Bighead carp (<i>Aristichthys nobilis</i>), goldfish (<i>Carassius auratus</i>), crucian carp (<i>Carassius carassius</i>), grass carp (<i>Ctenopharyngodon idellus</i>), common carp and koi carp (<i>Cyprinus carpio</i>), silver carp (<i>Hypophthalmichthys molitrix</i>), sheatfish (<i>Silurus glanis</i>), and tench (<i>Tinca tinca</i>), Orfe (<i>Leuciscus idus</i>)
Bacterial kidney disease (BKD)	Family: <i>Salmonidae</i>
Infectious pancreatic necrosis virus (IPN)	Rainbow trout (<i>Oncorhynchus mykiss</i>), brook trout (<i>Salvelinus fontinalis</i>), brown trout (<i>Salmo trutta</i>), Atlantic salmon (<i>Salmo salar</i>), and Pacific salmon (<i>Oncorhynchus spp.</i>) and whitefish (<i>Coregonus lavaretus</i>)
Infection with <i>Gyrodactylus salaris</i>	Atlantic salmon (<i>Salmo salar</i>), rainbow trout (<i>Oncorhynchus mykiss</i>), Arctic char (<i>Salvelinus alpinus</i>), North American brook trout (<i>Salvelinus fontinalis</i>), grayling (<i>Thymallus thymallus</i>), North American lake trout (<i>Salvelinus namaycush</i>) and brown trout (<i>Salmo trutta</i>).

ANNEX I DEC. 2010/221/EC (FREE STATUS)

DISEASE	MEMBER STATE	CODE	TERRITORY
SPRING VIREMIA OF CARPS	DENMARK	DK	WHOLE COUNTRY
	IRELAND	IE	WHOLE COUNTRY
	FINLAND	FI	WHOLE COUNTRY
	SWEDEN	SE	WHOLE COUNTRY
	HUNGARY	HU	WHOLE COUNTRY
	UNITED KINGDOM	UK	Northern Ireland Isle of Man Isle of Jersey Isle of Guernsey



**AQUACULTURE ANIMALS INTENDED FOR FARMING ,
RELYING AREAS, ORNAMENTAL OPEN FARMS AND
RESTOKING ,IN MS , ZONES OR COMPARTMENTS SUBJECT
TO DISEASE CONTROL MEASURES APPROVED IN
ACCORDANCE TO THE DECISION 2010/221/EC (
REGULATION 2010/346 - Art. 8 bis)**



•Susceptible species included in list
PART C, DEC. 2010/221/CE)

- Farming, relaying areas, PT fisheries ,
open ornamental , restoking
- Located in a EU MS/ territory included
in decision 2010/221/ (additional
garantees)

NOTE : VECTOR AND " INNOCENT" species are not considered

ANNEX II, PART A

CERTIFICATE MODEL FOR PLACING ON THE MARKET OF AQUACULTURE ANIMALS FOR FARMING, RELAYING, PUT AND TAKE FISHERIES, OPEN ORNAMENTAL FACILITIES AND RESTOCKING

II.1 General Health requirements

No clinical signs during the inspection (72/24 hours of loading)

In case of eggs and molluscs they come from a farm or mollusc farming area without disease problems

In the case of wild aquatic animals, according to the best of my knowledge and belief are clinically healthy];

Not subject to any prohibitions due to unresolved increased mortality;

Not intended for destruction or slaughter for the eradication of diseases;

Comply with the requirements for placing on the market laid down in Council Directive 2006/88/EC;

II.2 Requirements for species susceptible to VHS, IHN, Infectious salmon anaemia ISA, Koi herpes virus KHV, Marteilia refringens, Bonamia ostreae, and/or White spot disease

Origin from a MS, zone or compartment declared free

or

Quarantine (wild aquatic animals)

II.3 Requirements for vector species to VHS, IHN, ISA, KHV, Marteilia refringens, Bonamia ostreae, and/or White spot disease

Origin from a MS, zone or compartment declared free

or

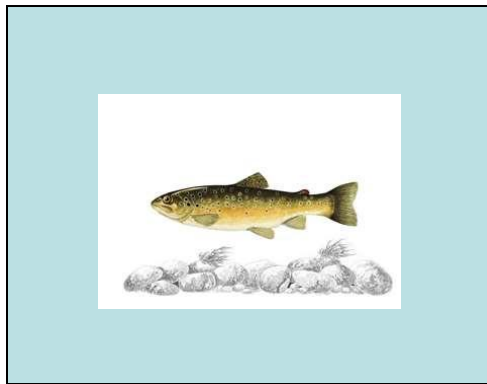
Quarantine (2008/946/EC).

II.7 Requirements for species susceptible to Spring vireamia of carp (SVC), Bacterial kidney disease (BKD), Infectious pancreatic necrosis virus (IPN) and Infection with Gyrodactylus salaris (GS)

IPN and BKD :
origin from a MS/zone/compartment/free according to the equivalent requirements laid down in Chapter VII of Directive 2006/88/EC],

SVC, GS :
complies with requirements for disease freedom laid down in the relevant OIE Standard.

AQUACULTURE ANIMALS AND PRODUCTS THEREOF INTENDED FOR FURTHER PROCESSING BEFORE HUMAN CONSUMPTION (EC reg.1251/2008- Art. 6)



•Susceptible

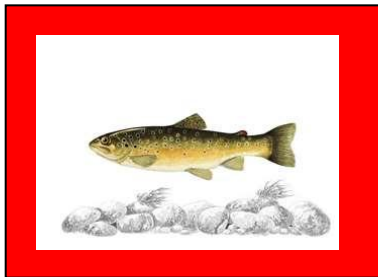
Certif. Part B
Annex II



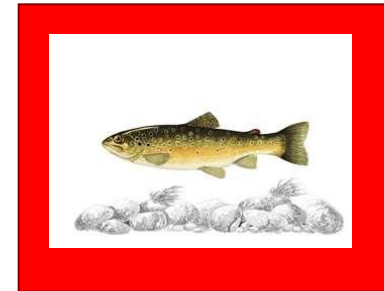
•Free MS/ zone/compartment or
have a surveillance programme for
a listed disease

**NOTE : "Innocent" and vectors species are not considered
Susceptible fish eviscerated before dispatch or packed in retail-sale
packages are not covered by 1251/2008 (REG.853/2004).**

AQUACULTURE ANIMALS AND PRODUCTS THEREOF LEAVING MS , ZONES AND COMPARTMENTS SUBJECT TO DISEASE CONTROL MEASURES INCLUDING ERADICATION PROGRAMMES (EC reg.1251/2008- Art. 8) - 1

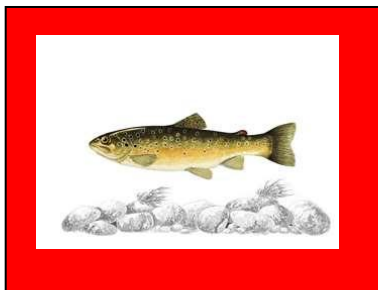


**Certif. Part A
Annex II**



- Aquaculture animals
- Origin from EU MS, zone, compartment subject to disease control measures,
- Exemption from disease control measures granted

- Farming, relaying areas, Put & take fisheries , open ornamental , restocking

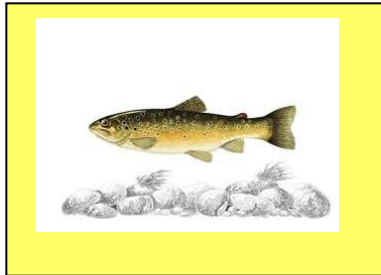


**Certif. Part B
Annex II**

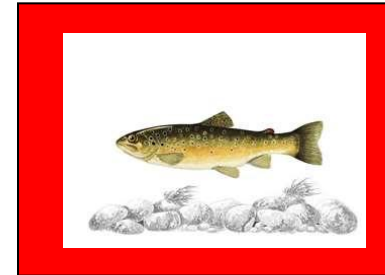


- Intended for further processing before human consumption

AQUACULTURE ANIMALS AND PRODUCTS THEREOF LEAVING MS , ZONES AND COMPARTMENTS SUBJECT TO DISEASE CONTROL MEASURES INCLUDING ERADICATION PROGRAMMES (EC reg.1251/2008- Art. 8)- 2



**Certif. Part A
Annex II**



- Susceptible(farming and processing) /vector (farming)
- Origin from an EU MS, zone, compartment with an eradication programme approved in accordance with art. 44 of directive 2006/88

- Intended for farming, relaying areas, Put & take fisheries , open ornamental , restocking

**Certif. Part B
Annex II**



NOTE : Fish eviscerated before dispatch or packed in retail-sale packaged are not covered (REG.853/2004).

- Intended for further processing, purification centres, dispatch centres, before human consumption



CONDITIONS FOR IMPORTS

IMPORT OF AQUACULTURE AND ORNAMENTAL FISH IS ONLY ADMITTED BY THIRD COUNTRIES INCLUDED IN ANNEX III OF REGULATION (EC) No 1251/2008





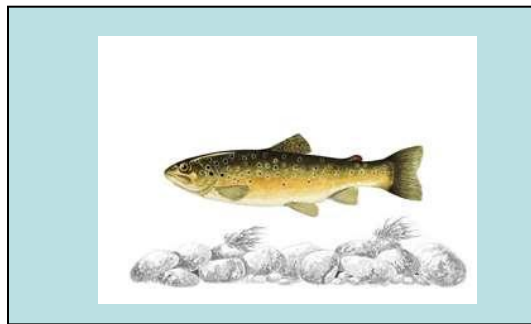
LIST OF THIRD COUNTRIES , TERRITORIES, ZONES AND COMPARTMENTS ANNEX III OF REGULATION (EC) No 1251/2008

CONTRY		TAXA			ZONE/COMPARTMENT	
Code	Name	Fish	Molluscs	Crustacea	Code	Description
US	United States	X		X	US 0 ^D	WHOLE COUNTRY
		X			US 1 ^E	WHOLE COUNTRY except New York, Ohio, Illinois, Michigan, Indiana Wisconsin, Minnesota Pennsylvania
		X			US 2	Humbold bay (California)
		X			US 3	Netarts Bay (Oregon)
		X			US 4	Wilapa Bay Toten inlet, Oakland bay, Quilcence bay, DAbob bay (Washington)
		X			US 5	

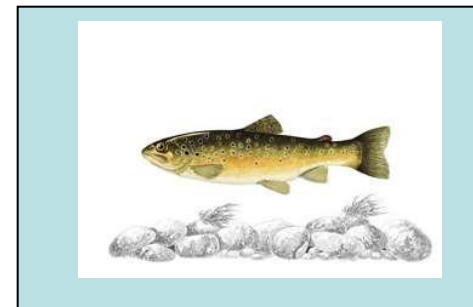
D : not applicable to fish susceptible/vectors to VHS

E : only applicable to fish susceptible/vectors to VHS

AQUACULTURE ANIMALS INTENDED FOR FARMING , PUT AND TAKE FISHERIES, OPEN ORNAMENTAL FACILITIES (EC reg.1251/2008- Art. 10)



**Certif. Part A
Annex IV**

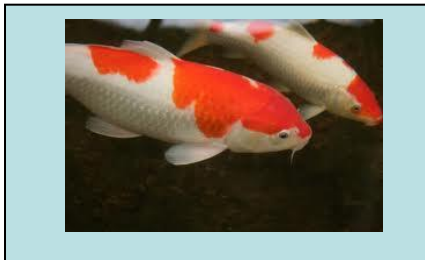


- **Aquaculture animals**
- **Origin from third Countries , zone /compartments listed in Annex III (REG 1251- 2008)**

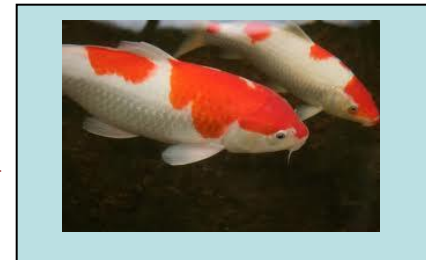
- **Intended for farming, relaying areas, PT fisheries , open ornamental facilities , restocking**



ORNAMENTAL AQUATIC FISH INTENDED FOR CLOSED ORNAMENTAL FACILITIES (EC reg.1251/2008- Art. 11)



**Certif. Part B
Annex IV**

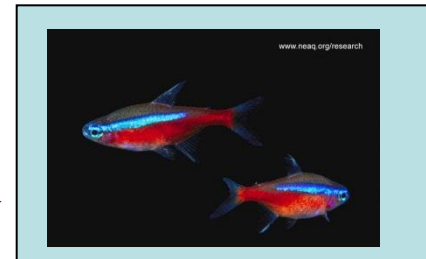


- Susceptible species
- Origin from third Countries , zone /compartments listed in Annex III (REG 1251- 2008)
- Susceptible to EUS from OIE MC (< December 2012)

Closed systems



**Certif. Part B
Annex IV**



- Vectors / innocent species
- Origin from listed Countries or from OIE MC

Closed systems



AQUACULTURE ANIMALS AND PRODUCT THEREOF INTENDED FOR HUMAN CONSUMPTION (EC reg.1251/2008- Art. 12)

- **Aquaculture animals**
- **Origin from third countries, territories, zones and compartments included in a list drawn up in accordance with regulation 854/2004**

CONSIGNMENTS SHALL :

BE ACCOMPANIED BY A JOINT PUBLIC AND ANIMAL HEALTH CERTIFICATE



QUARANTINE

Decision 2008/946/EC

- ✓ **QUARANTINE FACILITY IS AN AUTHORIZED FACILITY WHICH MAY CONTAINS ONE OR MORE UNITS WITH ANIMALS OF THE SAME CONSIGNMENT HAVING THE SAME HEALTH STATUS**
- ✓ **THE FACILITY MUST BE UNDER SUPERVISION OF CA**
- ✓ **THE FACILITY OPERATES ON PROTECTED WATER SOURCE AND EFFLUENT TREATMENTS. ACCESS IS LIMITED AND ONLY FOLLOWING STRICT HYGIENE MEASURES**
- ✓ **A QUALIFIED AQUATIC ANIMAL HEALTH PROFESSIONAL SHALL BE DESIGNATED BY THE CA TO CARRY OUT SPECIFIC CONTROLS**
- ✓ **SENTINEL FISH MAY BE USED FOR DETECTION OF SUBCLINICAL INFECTION IN VECTOR SPECIES**
- ✓ **FISH SHALL BE QUARANTINED FOR AT LEAST 60 DAYS (30 VECTORS)**
- ✓ **A LIST OF QUARANTINE FACILITIES SHALL BE AVAILABLE FROM THE COMMISSION TO MS**
- ✓ **QUARANTINE MAY BE CARRIED OUT IN FACILITIES LOCATED IN THIRD COUNTRIES FOR IMPORTS**



European
Commission

QUARANTINE FACILITY



By courtesy dr. F. Borghesan



PRACTICAL APPLICATION

Decision 2008/946/EC

**SUSCEPTIBLE WILD FISH CAPTURED IN NON FREE ZONES
MAY BE INTRODUCED IN FREE COMPARTMENTS
FOLLOWING A SUITABLE QUARANTINE PERIOD (60 DAYS)**

**VECTOR SPECIES INTENDED FOR AQUACULTURE ,
RELYING, PUT AND TAKE FISHERIES MAY BE INTRODUCED
/IMPORTED IN A MS/ZONE/COMPARTMENT FREE
FOLLOWING A SUITABLE QUARANTINE PERIOD (30 DAYS)**

**THE QUARANTINE MAY BE PERFORMED IN THE THIRD
COUNTRY OR IN THE MS**

WILD SPECIES

Wild species at risk of extinction and for which recovery programs exist in Italy :

- **MARBLE TROUT (*Salmo trutta marmoratus*)**
- **SARDINIAN TROUT (*Salmo trutta macrostigma*)**
- **LAKE TROUT (*Salmo trutta lacustris*)**
- **GRAYLING (*Thymallus thymallus*)**
- **WHITE FISH (*Coregonus lavaretus*)**

May be captured in the wild in non free areas and introduced in free compartments provide a suitable quarantine period is performed (60 days)



HEALTH CONTROL PROGRAMS

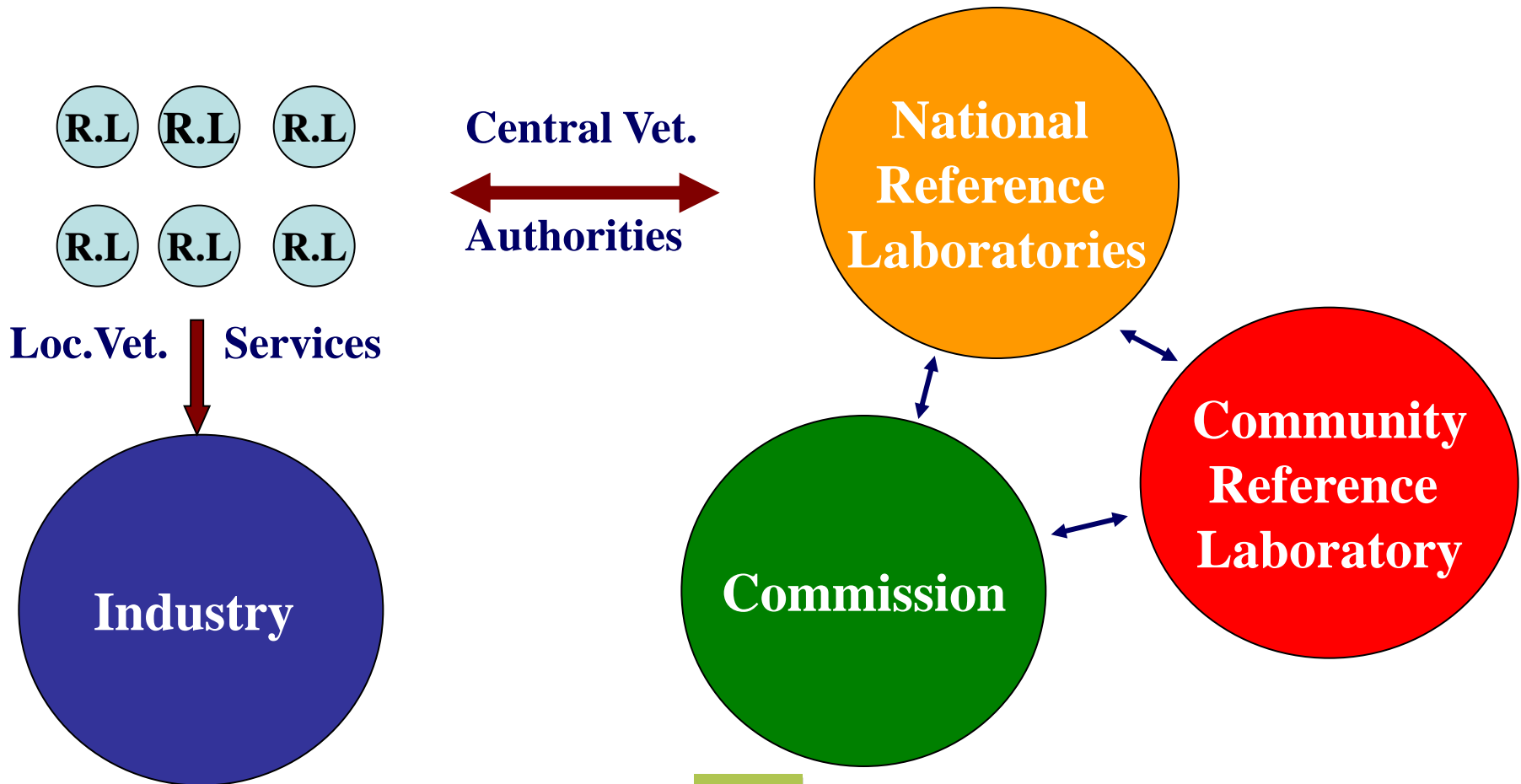
HEALTH CONTROL PROGRAMS

HEALTH CONTROLS	SUBJECT	RESPONSABILITY	FREQUENCE
RISK-BASED SURVEILLANCE ART.10	ANY INCREASE OF MORTALITY	FARMER	ACCORDING TO THE RISK LEVEL
OFFICIAL CONTROLS art. 8 -	REGULAR INSPECTION	COMPETENT AUTHORITY	ACCORDING TO THE RISK LEVEL
ACHIEVEMENT OF FREE STATUS	LISTED DISEASES	COMPETENT AUTHORITY	Dec.2001/183/CE
MAINTENANCE OF FREE STATUS	LISTED DISEASES	COMPETENT AUTHORITY	Dec.2001/183/CE



NATIONAL AND COMMUNITY LABORATORIES

CONTROL NETWORK FOR NOTIFIABLE DISEASES IN EU





DESIGNATION OF COMMUNITY REFERENCE LABORATORIES

CRL's are designated under Art 55 Directive 2006/88/and must fulfill the following requirements :

HAVE QUALIFIED STAFF, EQUIPMENTS , REFERENCE MATERIALS TO UNDERTAKE TASKS, APPROPRIATE ADMINISTRATION , INTERNATIONAL SCIENTIFIC KNOWLEDGE AND CONTACTS

NEED TO OPERATE, BE ASSESSED AND ACCREDITED WITH THE FOLLOWING EU STANDARDS: EN ISO/IEC 17025, EN 45002, EN 45003



FUNCTIONS AND DUTIES OF COMMUNITY REFERENCE LABORATORIES

**COORDINATE IN CONSULTATION WITH THE COMMISSION THE
METHODS EMPLOYED IN THE MS FOR DIAGNOSING CONCERNED**

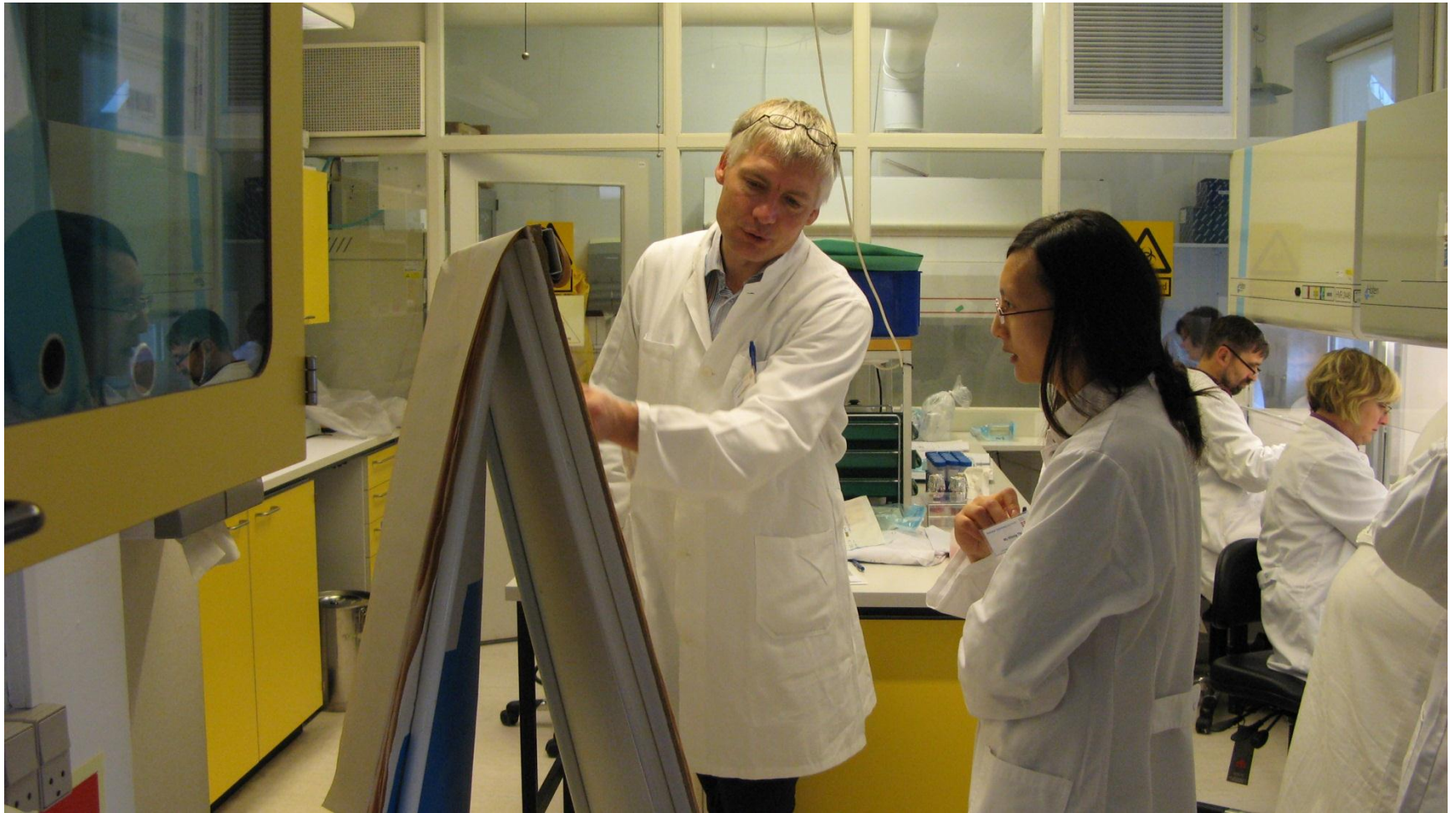
**ORGANIZING PERIODIC RING TRIALS
RETAINING EXPERTISE ON THE RELEVANT DISEASE PATHOGEN
TYPING STORING SUPPLYING STRAINS OF THE PATHOGEN OF THE
RELEVANT DISEASES TO FACILITATE THE DIAGNOSTIC SERVICE IN
THE COMMUNITY
SUPPLYING STANDARD SERA AND REFERENCE REAGENTS TO THE
NRL**

ASSIST MS IN DIAGNOSIS OF OUTBREAKS OF RELEVANT DISEASES

COLLABORATE WITH THE OIE REFERENCE LABS

**COLLATE AND FORWARD INFORMATION ON ENDEMIC AND EXOTIC
DISEASES**

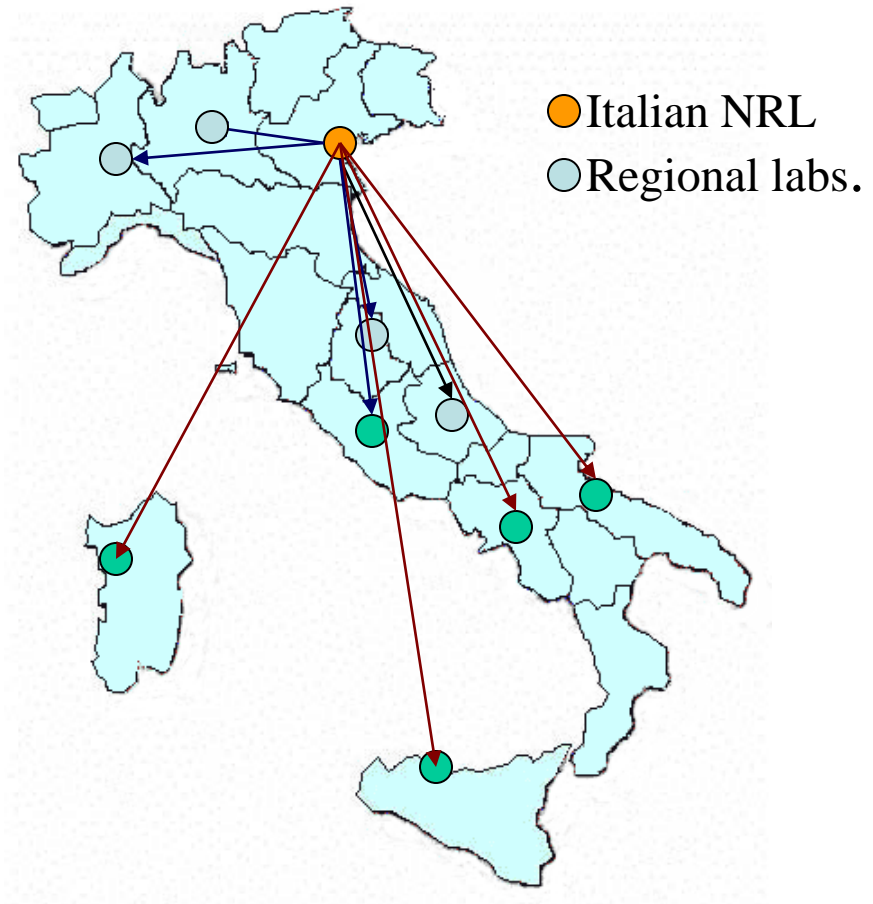
FACILITATE THE TRAINING OF EXPERTS



LIST OF NRLs FOR FISH DISEASES -1

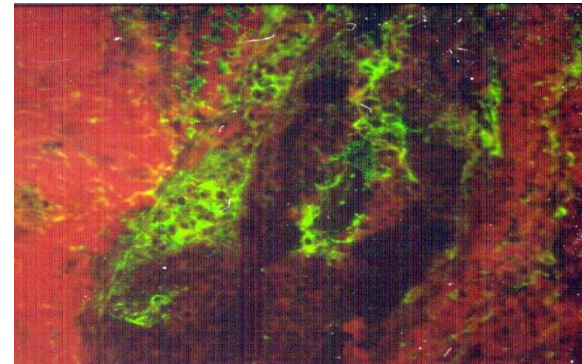
- AUSTRIA** : University of Wien, Wien
- BELGIUM** : Centre d'Etudes e de Recherche Vet et Agron.(CERVA) ,
Brussels
- CZECH REP.** : Veterinary Research Institute, Brno
- CYPRUS** : Istituto Zooprofilattico Sperimentale delle Venezie (IZS-VE) ,
Padua
- DENMARK** : National veterinary Institute, Technical University of Denmark, Aarhus
(CRL)
- ESTONIA** : Talliin Veterinary and Food LABORatory , Tallin
- FINLAND** : Finnish Food Safety Authority , Helsinki
- FRANCE** : Agence National de Securità sanitaire (ANSES), Brest
- GERMANY** : Federal research Institute for Animal Health , Insel Riems
- GREECE** : Center of Athens Veterinary Institutions , Athens
- HUNGARY** : Central Agriculture Office Veterinary diagnostic directorate, Budapest
- IRELAND** : Marine Institute, Fish Health Unit, Galway
- ITALY** : Istituto Zooprofilattico Sperimentale delle Venezie (IZS-VE) , Padua
- LATVIA** : Inst. Food Safety nimal disease diagnostic laboratory , Riga
- LITHUANIA** : Nat. Food and Veterinary Risk Assessment Institute , Vilnius
- LUXEMBOURG** : CERVA , Brussels
- NETHERLAND:** Central veterinary institute of wageningen Lelystad
- POLAND** : National veterinary research institute, Pulawy
- PORTUGAL** : Lab. Nacional Investigacao Veterinaria , Lisboa
- SLOVAKIA** : State Veterinary And Food Inst. , Dolny Kubin
- SLOVENIA** : Nat. Vet. Institute , university of Ljubljana
- SPAIN** : Lab. Central de Veterinaria, (MARM) Madrid
- SWEDEN** : National Veterinary Institute (SVA), Uppsal
- England & W.** : CEFAS Weymouth Laboratory , Weymouth
- Scotland** : Marine Scotland Science , Aberdeen

**COORDINATE, IN
CONSULTATION WITH
THE RELEVANT CRL THE
METHODS EMPLOYED IN
MEMBER STATES FOR
DIAGNOSING THE
DISEASE CONCERNED
UNDER THEIR
RESPONSIBILITY**



FUNCTIONS AND DUTIES OF NATIONAL REFERENCE LABORATORIES (NRL)

CONFIRM THE DIAGNOSIS OF RELEVANT DISEASES



FACILITATE THE TRAINING OF EXPERTS



ORGANISE PERIODIC COMPARATIVE TESTS AMONG AUTHORISED LABS



THANK YOU FOR YOUR ATTENTION

giuseppe.bovo@yahoo.it