

# Corporate presentation Royal Agrifirm Group

Apeldoorn, March 2014



*link to success*



# What is Agrifirm? In a nutshell

- Started in 2010 as a merger of co-ops Cehave Landbouwbelang and Agrifirm.
- Holding with subsidiaries in livestock and arable farming.
- International company, worldwide sales, production in Europe and China.
- Members in the Netherlands: 18,000 farmers.
- 2,956 fte, over 3,500 employees.
- Turnover 2013: € 2.5 billion.



# Our mission

Agrifirm creates **value for its members**:

- Our subsidiaries support clients by offering sustainable, profitable concepts to achieve the best results.
- Value growth of the company is transferred to the members by distribution of profit.

# Financial (2013)

**Turnover:**

€ 2,5 billion

**Group Equity:**

€ 393 million

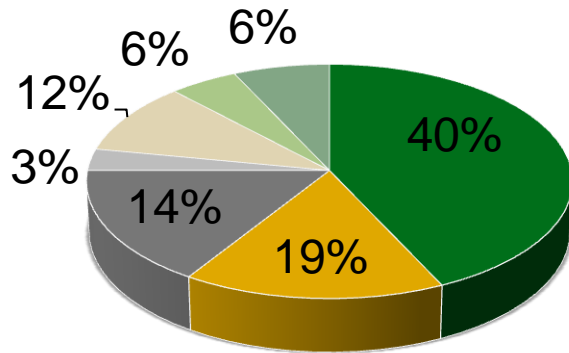
**Solvency:**

48,6%

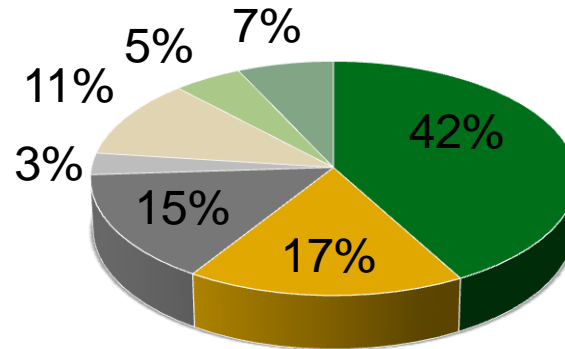
# Summary turnover Agrifirm Group (2)

## Agrifirm turnover by activity

**2013**



**2012**



■ Feed Netherlands

■ Feed Europe

■ Plant Netherlands

■ Plant Germany

■ Nuscience

■ Co-products

■ Other activities

# Core values: our DNA

## **Together:**

With each other, with our clients/suppliers.

## **Honest business:**

Fair pricing, no surprises.

## **Quality:**

We never stop doing things better.



# Brand values: our image

**Innovative:**

We are leading in knowledge and concepts.

**Dedicated:**

We act in the client's interest and are thinking along.

**Result driven:**

We deliver solutions for the client's result.

**Sustainable:**

We contribute to 'the licence to produce' of our clients.

# International business





# International business



# International business



# International business



# International business



# International business



# International business



# International business



# International business





# International business



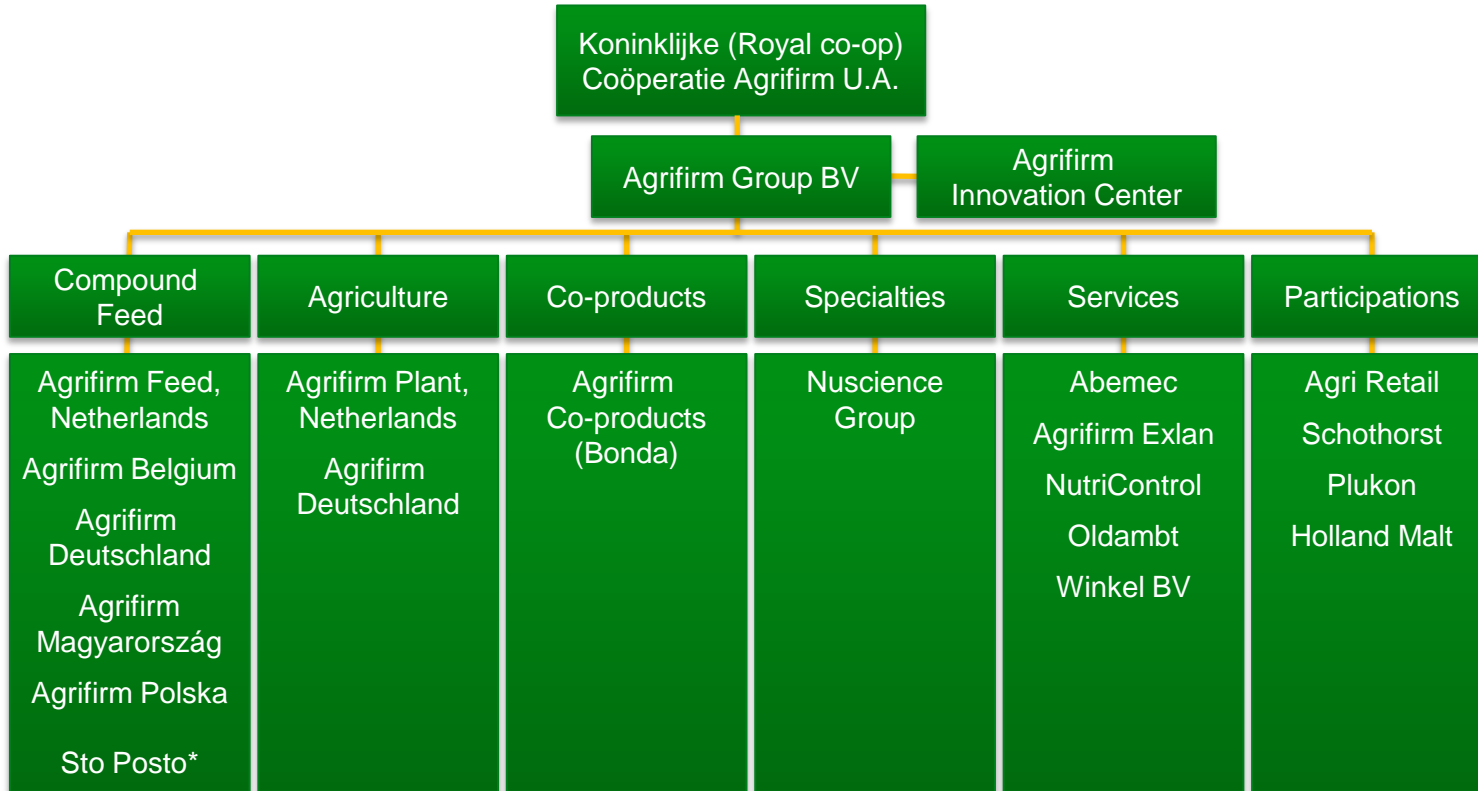
# International business



# International business



# Organization Royal Agrifirm Group



\* Minority interest

# Agrifirm Feed

Country	Production locations	Tonnes compound feed
Netherlands	7 factories	2.758.000
Belgium	1 factory	269.000
Germany	3 factories	687.000
Hungary	3 factories	222.000
Poland	3 factories	182.000
	total	5.118.000



# Plant Agrifirm Zwolle

- Current year production: 300.000 ton
- 1.000 ton of Pig feed per day
- Operating time 145 hours a week
- Four shifts
- Total staf 22 persons



# Plant Agrifirm Zwolle

- Storage capacity raw materials 6.000 ton
- 50 storage silos for raw materials
- 56 storage silo for premix
- Max storage finished goods 2.000 ton
- 100 storage silos for finished goods



# Plant Agrifirm Zwolle

- Intake raw materials 75% by ship
- Efficient loading of trucks by robot
- Only 2 operators to run the factory
- Highly automated
- Close to the customer





We are a

Link to success for farmers



*link to success*