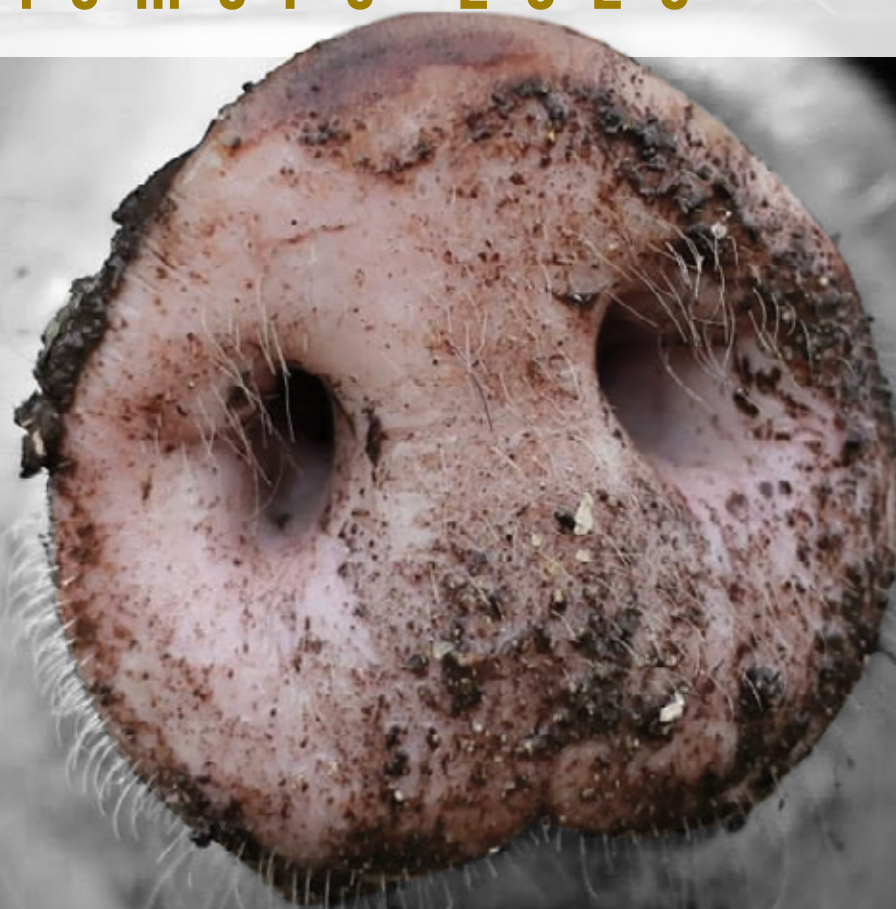


# RESULTADOS DE LAS ENCUESTAS DE GANADO PORCINO

noviembre 2025



GOBIERNO  
DE ESPAÑA

MINISTERIO  
DE AGRICULTURA, PESCA  
Y ALIMENTACIÓN

ENCUESTAS GANADERAS, 2025							
GANADO PORCINO							
Análisis provincial del censo de animales por tipos, NOVIEMBRE 2025 (número de animales)							
Provincias y Comunidades Autónomas	Total animales	Lechones <sup>1</sup>	Cerdos de 20-49 kg (peso vivo)	Cerdos en cebo			
				Total cerdos de cebo (peso vivo)	De 50-79 kg	De 80-109 kg	> 109 kg
Coruña (La)	329.364	146.233	39.770	107.610	53.410	52.598	1.602
Lugo	329.801	53.737	93.042	173.808	74.777	80.998	18.033
Orense	306.822	78.841	38.067	163.283	57.154	90.023	16.106
Pontevedra	381.844	103.390	116.758	140.710	89.188	47.125	4.397
<b>GALICIA</b>	<b>1.347.831</b>	<b>382.201</b>	<b>287.637</b>	<b>585.411</b>	<b>274.529</b>	<b>270.744</b>	<b>40.138</b>
<b>P. DE ASTURIAS</b>	<b>2.494</b>	<b>309</b>	<b>303</b>	<b>1.414</b>	<b>228</b>	<b>447</b>	<b>739</b>
<b>CANTABRIA</b>	<b>647</b>	<b>133</b>	<b>148</b>	<b>169</b>	<b>26</b>	<b>72</b>	<b>71</b>
Alava	16.791	2.954	401	12.636	7.448	4.881	307
Guipúzcoa	5.532	615	2.420	2.299	751	830	718
Vizcaya	1.920	73	411	1.323	325	844	154
<b>PAIS VASCO</b>	<b>24.243</b>	<b>3.642</b>	<b>3.232</b>	<b>16.258</b>	<b>8.524</b>	<b>6.555</b>	<b>1.179</b>
<b>NAVARRA</b>	<b>775.753</b>	<b>187.301</b>	<b>76.727</b>	<b>448.651</b>	<b>224.627</b>	<b>193.501</b>	<b>30.523</b>
<b>LA RIOJA</b>	<b>170.185</b>	<b>54.518</b>	<b>20.356</b>	<b>90.526</b>	<b>40.807</b>	<b>44.800</b>	<b>4.919</b>
Huesca	4.931.412	1.645.440	925.105	2.068.555	662.532	956.496	449.527
Teruel	1.305.387	286.245	293.712	633.409	131.246	329.622	172.541
Zaragoza	3.181.472	1.080.512	741.429	1.035.289	282.742	537.396	215.151
<b>ARAGON</b>	<b>9.418.271</b>	<b>3.012.197</b>	<b>1.960.246</b>	<b>3.737.253</b>	<b>1.076.520</b>	<b>1.823.514</b>	<b>837.219</b>
Barcelona	1.842.591	568.161	301.070	792.810	373.962	299.246	119.602
Girona	987.643	304.905	191.576	403.110	140.001	190.900	72.209
Lleida	4.841.921	1.664.667	730.303	2.131.991	831.485	805.427	495.079
Tarragona	624.999	219.625	117.857	225.811	54.210	132.652	38.949
<b>CATALUÑA</b>	<b>8.297.154</b>	<b>2.757.358</b>	<b>1.340.806</b>	<b>3.553.722</b>	<b>1.399.658</b>	<b>1.428.225</b>	<b>725.839</b>
<b>BALEARES</b>	<b>50.674</b>	<b>20.185</b>	<b>3.781</b>	<b>16.718</b>	<b>3.147</b>	<b>6.583</b>	<b>6.988</b>
Ávila	268.116	84.178	50.591	111.699	31.987	43.731	35.981
Burgos	530.700	141.705	229.759	123.723	42.200	50.816	30.707
León	146.163	20.656	35.828	84.391	48.759	19.447	16.185
Palencia	149.339	66.111	36.285	34.415	19.151	13.290	1.974
Salamanca	629.309	128.693	118.151	319.697	99.186	88.516	131.995
Segovia	1.164.748	361.193	189.499	475.957	213.825	209.462	52.670
Soria	567.481	159.904	131.409	219.570	61.556	135.337	22.677
Valladolid	369.018	114.797	78.819	139.026	44.753	54.424	39.849
Zamora	539.338	161.370	82.309	252.957	94.994	103.157	54.806
<b>CASTILLA LEON</b>	<b>4.364.212</b>	<b>1.238.607</b>	<b>952.650</b>	<b>1.761.435</b>	<b>656.411</b>	<b>718.180</b>	<b>386.844</b>
<b>MADRID</b>	<b>16.268</b>	<b>9.793</b>	<b>1.181</b>	<b>1.635</b>	<b>837</b>	<b>0</b>	<b>798</b>
Albacete	351.932	141.500	52.191	136.807	52.810	50.541	33.456
Ciudad Real	56.865	18.484	8.844	23.921	6.209	7.790	9.922
Cuenca	338.202	90.720	78.587	128.033	31.902	64.337	31.794
Guadalajara	20.361	5.900	8.230	3.475	0	1.624	1.851
Toledo	1.040.390	206.774	306.227	459.078	184.205	206.662	68.211
<b>CASTILLA LA MANCHA</b>	<b>1.807.750</b>	<b>463.378</b>	<b>454.079</b>	<b>751.314</b>	<b>275.126</b>	<b>330.954</b>	<b>145.234</b>
Alicante	55.230	33.490	5.615	10.103	6.964	1.340	1.799
Castellón	613.008	103.285	184.567	293.639	133.687	158.228	1.724
Valencia	369.337	82.690	93.539	164.230	95.963	44.948	23.319
<b>C. VALENCIANA</b>	<b>1.037.575</b>	<b>219.465</b>	<b>283.721</b>	<b>467.972</b>	<b>236.614</b>	<b>204.516</b>	<b>26.842</b>
<b>R. DE MURCIA</b>	<b>2.154.617</b>	<b>600.188</b>	<b>363.552</b>	<b>1.050.293</b>	<b>501.591</b>	<b>363.318</b>	<b>185.384</b>
Badajoz	1.211.084	284.887	198.871	587.569	106.530	199.226	281.813
Cáceres	154.197	23.004	24.234	92.330	16.029	33.178	43.123
<b>EXTREMADURA</b>	<b>1.365.281</b>	<b>307.891</b>	<b>223.105</b>	<b>679.899</b>	<b>122.559</b>	<b>232.404</b>	<b>324.936</b>
Almería	673.759	183.401	205.821	244.998	40.756	127.144	77.098
Cádiz	61.613	19.393	16.158	15.916	7.814	3.217	4.885
Córdoba	267.817	40.142	35.578	166.816	28.309	59.493	79.014
Granada	337.746	164.880	33.540	89.539	43.687	36.392	9.460
Huelva	261.916	65.590	48.484	125.461	18.097	50.259	57.105
Jaén	146.896	47.494	22.127	58.141	35.117	20.671	2.353
Málaga	396.171	106.386	82.753	166.415	60.155	95.632	10.628
Sevilla	625.799	179.374	130.606	263.895	57.137	149.467	57.291
<b>ANDALUCIA</b>	<b>2.771.717</b>	<b>806.660</b>	<b>575.067</b>	<b>1.131.181</b>	<b>291.072</b>	<b>542.275</b>	<b>297.834</b>
Palmas (Las)	16.024	5.573	3.406	4.217	2.794	1.411	12
S. C. Tenerife	24.996	8.096	5.730	7.933	4.319	3.519	95
<b>CANARIAS</b>	<b>41.020</b>	<b>13.669</b>	<b>9.136</b>	<b>12.150</b>	<b>7.113</b>	<b>4.930</b>	<b>107</b>
<b>ESPAÑA</b>	<b>33.645.692</b>	<b>10.077.495</b>	<b>6.555.727</b>	<b>14.306.001</b>	<b>5.119.389</b>	<b>6.171.018</b>	<b>3.015.594</b>

<sup>1</sup> Cerdos con un peso vivo inferior a 20 Kg.  
Cambio metodológico en 2023

ENCUESTAS GANADERAS, 2025						
GANADO PORCINO						
Análisis provincial del censo de animales por tipos, NOVIEMBRE 2025 (número de animales)						
Provincias y Comunidades Autónomas	Verracos	Cerdas Reproductoras				
		Total Cerdas Reproductoras	Nunca han parido		Han parido	
			Cerdas todavía no cubiertas	Cerdas cubiertas por 1ª vez	Cerdas cubiertas más veces	Cerdas criando o en reposo
Coruña (La)	145	35.606	8.167	3.581	16.881	6.977
Lugo	100	9.114	1.560	1.476	4.295	1.783
Orense	57	26.574	10.248	974	11.429	3.923
Pontevedra	92	20.894	8.016	1.543	9.326	2.009
<b>GALICIA</b>	<b>394</b>	<b>92.188</b>	<b>27.991</b>	<b>7.574</b>	<b>41.931</b>	<b>14.692</b>
<b>P. DE ASTURIAS</b>	<b>39</b>	<b>429</b>	<b>2</b>	<b>30</b>	<b>173</b>	<b>224</b>
<b>CANTABRIA</b>	<b>15</b>	<b>182</b>	<b>22</b>	<b>40</b>	<b>58</b>	<b>62</b>
Alava	8	792	40	121	263	368
Guipúzcoa	2	196	18	10	120	48
Vizcaya	19	94	7	7	44	36
<b>PAIS VASCO</b>	<b>29</b>	<b>1.082</b>	<b>65</b>	<b>138</b>	<b>427</b>	<b>452</b>
<b>NAVARRA</b>	<b>237</b>	<b>62.837</b>	<b>8.624</b>	<b>8.998</b>	<b>32.973</b>	<b>12.242</b>
<b>LA RIOJA</b>	<b>18</b>	<b>4.767</b>	<b>334</b>	<b>380</b>	<b>2.961</b>	<b>1.092</b>
Huesca	777	291.535	32.192	41.061	152.234	66.048
Teruel	227	91.794	12.626	15.162	46.188	17.818
Zaragoza	876	323.366	79.566	41.770	152.678	49.352
<b>ARAGON</b>	<b>1.880</b>	<b>706.695</b>	<b>124.384</b>	<b>97.993</b>	<b>351.100</b>	<b>133.218</b>
Barcelona	625	179.925	31.004	16.195	88.133	44.593
Girona	367	87.685	9.629	11.946	42.177	23.933
Lleida	1.067	313.893	33.364	38.613	180.833	61.083
Tarragona	311	61.395	6.626	7.631	35.832	11.306
<b>CATALUÑA</b>	<b>2.370</b>	<b>642.898</b>	<b>80.623</b>	<b>74.385</b>	<b>346.975</b>	<b>140.915</b>
<b>BALEARES</b>	<b>588</b>	<b>9.402</b>	<b>801</b>	<b>3.192</b>	<b>2.912</b>	<b>2.497</b>
Ávila	132	21.516	3.652	2.994	9.270	5.600
Burgos	401	35.112	2.809	4.334	20.005	7.964
León	49	5.239	427	373	2.829	1.610
Palencia	35	12.493	845	1.544	7.896	2.208
Salamanca	1.242	61.526	7.654	6.581	34.715	12.576
Segovia	5.089	133.010	14.441	12.943	73.327	32.299
Soria	1.138	55.460	10.139	6.884	27.798	10.639
Valladolid	527	35.849	3.154	4.305	20.195	8.195
Zamora	312	42.390	9.758	5.488	18.266	8.878
<b>CASTILLA LEON</b>	<b>8.925</b>	<b>402.595</b>	<b>52.879</b>	<b>45.446</b>	<b>214.301</b>	<b>89.969</b>
<b>MADRID</b>	<b>54</b>	<b>3.605</b>	<b>456</b>	<b>516</b>	<b>1.747</b>	<b>886</b>
Albacete	97	21.337	2.549	4.205	10.296	4.287
Ciudad Real	158	5.458	378	719	3.158	1.203
Cuenca	166	40.696	8.095	4.366	20.507	7.728
Guadalajara	6	2.750	494	263	955	1.038
Toledo	710	67.601	7.008	7.197	38.002	15.394
<b>CASTILLA LA MANCHA</b>	<b>1.137</b>	<b>137.842</b>	<b>18.524</b>	<b>16.750</b>	<b>72.918</b>	<b>29.650</b>
Alicante	24	5.998	634	500	3.671	1.193
Castellón	157	31.360	3.445	3.250	16.884	7.781
Valencia	100	28.778	2.150	3.276	17.974	5.378
<b>C. VALENCIANA</b>	<b>281</b>	<b>66.136</b>	<b>6.229</b>	<b>7.026</b>	<b>38.529</b>	<b>14.352</b>
<b>R. DE MURCIA</b>	<b>422</b>	<b>140.162</b>	<b>14.937</b>	<b>18.018</b>	<b>74.088</b>	<b>33.119</b>
Badajoz	5.089	134.668	19.529	9.637	66.118	39.384
Cáceres	345	14.284	3.813	1.880	5.481	3.110
<b>EXTREMADURA</b>	<b>5.434</b>	<b>148.952</b>	<b>23.342</b>	<b>11.517</b>	<b>71.599</b>	<b>42.494</b>
Almería	1.058	38.481	14.124	4.700	15.193	4.464
Cádiz	311	9.835	1.119	1.069	4.611	3.036
Córdoba	1.084	24.197	3.220	1.838	11.875	7.264
Granada	831	48.956	5.408	8.202	27.076	8.270
Huelva	1.344	21.037	2.849	4.241	8.459	5.488
Jaén	141	18.993	2.123	2.662	11.304	2.904
Málaga	388	40.229	5.921	4.307	22.541	7.460
Sevilla	773	51.151	10.615	9.554	20.048	10.934
<b>ANDALUCIA</b>	<b>5.930</b>	<b>252.879</b>	<b>45.379</b>	<b>36.573</b>	<b>121.107</b>	<b>49.820</b>
Palmas (Las)	165	2.663	184	267	1.439	773
S. C. Tenerife	306	2.931	423	588	1.374	546
<b>CANARIAS</b>	<b>471</b>	<b>5.594</b>	<b>607</b>	<b>855</b>	<b>2.813</b>	<b>1.319</b>
<b>ESPAÑA</b>	<b>28.224</b>	<b>2.678.245</b>	<b>405.199</b>	<b>329.431</b>	<b>1.376.612</b>	<b>567.003</b>

ENCUESTAS GANADERAS, 2025 GANADO PORCINO <sup>1</sup> Análisis provincial del censo de animales por tipos, NOVIEMBRE 2025 (número de animales)								
Provincias y Comunidades Autónomas	Total animales	Lechones <sup>2</sup>	Cerdos de 20-49 kg (peso vivo)	Cerdos en cebo				
				Total cerdos de cebo (peso vivo)	De 50-79 kg	De 80-109 kg	> 109 kg	
Coruña (La)	329.364	146.233	39.770	107.610	53.410	52.598	1.602	
Lugo	329.801	53.737	93.042	173.808	74.777	80.998	18.033	
Orense	306.822	78.841	38.067	163.283	57.154	90.023	16.106	
Pontevedra	381.844	103.390	116.758	140.710	89.188	47.125	4.397	
<b>GALICIA</b>	<b>1.347.831</b>	<b>382.201</b>	<b>287.637</b>	<b>585.411</b>	<b>274.529</b>	<b>270.744</b>	<b>40.138</b>	
<b>P. DE ASTURIAS</b>	<b>2.389</b>	<b>309</b>	<b>303</b>	<b>1.309</b>	<b>193</b>	<b>412</b>	<b>704</b>	
<b>CANTABRIA</b>	<b>647</b>	<b>133</b>	<b>148</b>	<b>169</b>	<b>26</b>	<b>72</b>	<b>71</b>	
Alava	16.791	2.954	401	12.636	7.448	4.881	307	
Guipúzcoa	5.532	615	2.420	2.299	751	830	718	
Vizcaya	1.920	73	411	1.323	325	844	154	
<b>PAIS VASCO</b>	<b>24.243</b>	<b>3.642</b>	<b>3.232</b>	<b>16.258</b>	<b>8.524</b>	<b>6.555</b>	<b>1.179</b>	
<b>NAVARRA</b>	<b>775.753</b>	<b>187.301</b>	<b>76.727</b>	<b>448.651</b>	<b>224.627</b>	<b>193.501</b>	<b>30.523</b>	
<b>LA RIOJA</b>	<b>170.185</b>	<b>54.518</b>	<b>20.356</b>	<b>90.526</b>	<b>40.807</b>	<b>44.800</b>	<b>4.919</b>	
Huesca	4.905.792	1.621.320	925.105	2.067.055	662.532	954.996	449.527	
Teruel	1.305.387	286.245	293.712	633.409	131.246	329.622	172.541	
Zaragoza	3.179.445	1.079.234	741.429	1.035.289	282.742	537.396	215.151	
<b>ARAGON</b>	<b>9.390.624</b>	<b>2.986.799</b>	<b>1.960.246</b>	<b>3.735.753</b>	<b>1.076.520</b>	<b>1.822.014</b>	<b>837.219</b>	
Barcelona	1.840.400	566.755	301.070	792.798	373.962	299.246	119.590	
Girona	987.643	304.905	191.576	403.110	140.001	190.900	72.209	
Lleida	4.828.874	1.659.452	728.475	2.130.189	830.023	805.087	495.079	
Tarragona	624.999	219.625	117.857	225.811	54.210	132.652	38.949	
<b>CATALUÑA</b>	<b>8.281.916</b>	<b>2.750.737</b>	<b>1.338.978</b>	<b>3.551.908</b>	<b>1.398.196</b>	<b>1.427.885</b>	<b>725.827</b>	
<b>BALEARES</b>	<b>50.674</b>	<b>20.185</b>	<b>3.781</b>	<b>16.718</b>	<b>3.147</b>	<b>6.583</b>	<b>6.988</b>	
Ávila	184.653	79.115	31.903	53.011	16.545	22.305	14.161	
Burgos	515.319	132.481	225.081	123.079	42.200	50.601	30.278	
León	122.172	20.649	35.828	60.409	28.403	19.447	12.559	
Palencia	149.339	66.111	36.285	34.415	19.151	13.290	1.974	
Salamanca	63.731	29.888	6.119	14.917	5.113	8.049	1.755	
Segovia	1.043.382	342.208	167.004	406.681	183.796	195.512	27.373	
Soria	550.892	149.802	128.559	219.570	61.556	135.337	22.677	
Valladolid	277.832	85.538	71.422	95.598	33.942	44.640	17.016	
Zamora	450.611	124.715	74.564	213.558	88.004	94.109	31.445	
<b>CASTILLA LEON</b>	<b>3.357.931</b>	<b>1.030.507</b>	<b>776.765</b>	<b>1.221.238</b>	<b>478.710</b>	<b>583.290</b>	<b>159.238</b>	
<b>MADRID</b>	<b>16.268</b>	<b>9.793</b>	<b>1.181</b>	<b>1.635</b>	<b>837</b>	<b>0</b>	<b>798</b>	
Albacete	283.988	141.497	52.190	70.188	30.606	28.330	11.252	
Ciudad Real	22.691	8.714	4.436	7.912	1.411	3.692	2.809	
Cuenca	310.341	87.106	72.681	113.781	24.168	58.788	30.825	
Guadalajara	18.267	4.444	8.223	3.469	0	1.620	1.849	
Toledo	923.120	187.657	286.519	396.116	162.444	186.277	47.395	
<b>CASTILLA LA MANCHA</b>	<b>1.558.407</b>	<b>429.418</b>	<b>424.049</b>	<b>591.466</b>	<b>218.629</b>	<b>278.707</b>	<b>94.130</b>	
Alicante	55.230	33.490	5.615	10.103	6.964	1.340	1.799	
Castellón	611.087	102.085	184.567	293.639	133.687	158.228	1.724	
Valencia	369.337	82.690	93.539	164.230	95.963	44.948	23.319	
<b>C. VALENCIANA</b>	<b>1.035.654</b>	<b>218.265</b>	<b>283.721</b>	<b>467.972</b>	<b>236.614</b>	<b>204.516</b>	<b>26.842</b>	
<b>R. DE MURCIA</b>	<b>1.983.406</b>	<b>579.001</b>	<b>351.485</b>	<b>926.630</b>	<b>460.323</b>	<b>317.088</b>	<b>149.219</b>	
Badajoz	62.825	33.939	8.113	10.547	1.352	7.040	2.155	
Cáceres	2.501	0	8	49	4	28	17	
<b>EXTREMADURA</b>	<b>65.326</b>	<b>33.939</b>	<b>8.121</b>	<b>10.596</b>	<b>1.356</b>	<b>7.068</b>	<b>2.172</b>	
Almería	635.961	166.128	201.455	235.364	39.606	122.119	73639	
Cádiz	13.203	4.309	5.122	2.383	645	1.688	50	
Córdoba	41.940	10.698	6.131	20.473	12.291	4.487	3695	
Granada	299.456	160.500	24.650	67.733	36.365	29.218	2150	
Huelva	6.790	3.969	0	1.219	698	200	321	
Jaén	122.163	34.104	20.298	53.714	33.287	19.261	1166	
Málaga	360.788	97.078	75.050	152.558	58.288	92.092	2178	
Sevilla	374.218	126.392	93.526	124.635	27.232	89.039	8364	
<b>ANDALUCIA</b>	<b>1.854.519</b>	<b>603.178</b>	<b>426.232</b>	<b>658.079</b>	<b>209.455</b>	<b>357.061</b>	<b>91563</b>	
Palmas (Las)	15.883	5.532	3.401	4.192	2.782	1.398	12	
S. C. Tenerife	24.996	8.096	5.730	7.933	4.319	3.519	95	
<b>CANARIAS</b>	<b>40.879</b>	<b>13.628</b>	<b>9.131</b>	<b>12.125</b>	<b>7.101</b>	<b>4.917</b>	<b>107</b>	
<b>ESPAÑA</b>	<b>29.956.652</b>	<b>9.303.554</b>	<b>5.972.093</b>	<b>12.336.444</b>	<b>4.639.594</b>	<b>5.525.213</b>	<b>2.171.637</b>	

<sup>1</sup> No incluye el porcino ibérico

<sup>2</sup> Cerdos con un peso vivo inferior a 20 Kg.

ENCUESTAS GANADERAS, 2025						
GANADO PORCINO <sup>1</sup>						
Análisis provincial del censo de animales por tipos, NOVIEMBRE 2025 (número de animales)						
Provincias y Comunidades Autónomas	Verracos	Cerdas Reproductoras				
		Total Cerdas Reproductoras	Nunca han parido		Han parido	
			Cerdas todavía no cubiertas	Cerdas cubiertas por 1ª vez	Cerdas cubiertas más veces	Cerdas criando o en reposo
Coruña (La)	145	35.606	8.167	3.581	16.881	6.977
Lugo	100	9.114	1.560	1.476	4.295	1.783
Orense	57	26.574	10.248	974	11.429	3.923
Pontevedra	92	20.894	8.016	1.543	9.326	2.009
<b>GALICIA</b>	<b>394</b>	<b>92.188</b>	<b>27.991</b>	<b>7.574</b>	<b>41.931</b>	<b>14.692</b>
<b>P. DE ASTURIAS</b>	<b>39</b>	<b>429</b>	<b>2</b>	<b>30</b>	<b>173</b>	<b>224</b>
<b>CANTABRIA</b>	<b>15</b>	<b>182</b>	<b>22</b>	<b>40</b>	<b>58</b>	<b>62</b>
Alava	8	792	40	121	263	368
Guipúzcoa	2	196	18	10	120	48
Vizcaya	19	94	7	7	44	36
<b>PAIS VASCO</b>	<b>29</b>	<b>1.082</b>	<b>65</b>	<b>138</b>	<b>427</b>	<b>452</b>
<b>NAVARRA</b>	<b>237</b>	<b>62.837</b>	<b>8.624</b>	<b>8.998</b>	<b>32.973</b>	<b>12.242</b>
<b>LA RIOJA</b>	<b>18</b>	<b>4.767</b>	<b>334</b>	<b>380</b>	<b>2.961</b>	<b>1.092</b>
Huesca	777	291.535	32.192	41.061	152.234	66.048
Teruel	227	91.794	12.626	15.162	46.188	17.818
Zaragoza	872	322.621	79.566	41.768	152.145	49.142
<b>ARAGON</b>	<b>1.876</b>	<b>705.950</b>	<b>124.384</b>	<b>97.991</b>	<b>350.567</b>	<b>133.008</b>
Barcelona	621	179.156	30.965	16.073	87.684	44.434
Girona	367	87.685	9.629	11.946	42.177	23.933
Lleida	1.058	309.700	32.757	37.936	178.750	60.257
Tarragona	311	61.395	6.626	7.631	35.832	11.306
<b>CATALUÑA</b>	<b>2.357</b>	<b>637.936</b>	<b>79.977</b>	<b>73.586</b>	<b>344.443</b>	<b>139.930</b>
<b>BALEARES</b>	<b>588</b>	<b>9.402</b>	<b>801</b>	<b>3.192</b>	<b>2.912</b>	<b>2.497</b>
Avila	115	20.509	3.482	2.943	8.705	5.379
Burgos	301	34.377	2.780	4.277	19.576	7.744
León	48	5.238	427	373	2.829	1.609
Palencia	35	12.493	845	1.544	7.896	2.208
Salamanca	190	12.617	1.152	1.345	7.881	2.239
Segovia	5.027	122.462	13.552	11.691	66.973	30.246
Soria	1.117	51.844	9.958	6.571	25.452	9.863
Valladolid	434	24.840	2.160	3.077	13.716	5.887
Zamora	256	37.518	9.347	4.956	16.263	6.952
<b>CASTILLA LEON</b>	<b>7.523</b>	<b>321.898</b>	<b>43.703</b>	<b>36.777</b>	<b>169.291</b>	<b>72.127</b>
<b>MADRID</b>	<b>54</b>	<b>3.605</b>	<b>456</b>	<b>516</b>	<b>1.747</b>	<b>886</b>
Albacete	92	20.021	1.843	3.600	10.293	4.285
Ciudad Real	86	1.543	133	299	736	375
Cuenca	166	36.607	7.785	4.299	18.283	6.240
Guadalajara	2	2.129	421	211	608	889
Toledo	585	52.243	5.077	5.560	29.700	11.906
<b>CASTILLA LA MANCHA</b>	<b>931</b>	<b>112.543</b>	<b>15.259</b>	<b>13.969</b>	<b>59.620</b>	<b>23.695</b>
Alicante	24	5.998	634	500	3.671	1.193
Castellón	155	30.641	3.349	3.185	16.523	7.584
Valencia	100	28.778	2.150	3.276	17.974	5.378
<b>C. VALENCIANA</b>	<b>279</b>	<b>65.417</b>	<b>6.133</b>	<b>6.961</b>	<b>38.168</b>	<b>14.155</b>
<b>R. DE MURCIA</b>	<b>363</b>	<b>125.927</b>	<b>12.989</b>	<b>16.068</b>	<b>67.423</b>	<b>29.447</b>
Badajoz	279	9.947	1.106	2.614	4.311	1.916
Cáceres	21	2.423	2.394	0	25	4
<b>EXTREMADURA</b>	<b>300</b>	<b>12.370</b>	<b>3.500</b>	<b>2.614</b>	<b>4.336</b>	<b>1.920</b>
Almería	1.015	31.999	13.543	3.786	11.679	2.991
Cádiz	26	1.363	167	198	435	563
Córdoba	131	4.507	491	306	2.286	1.424
Granada	762	45.811	5.173	7.671	25.393	7.574
Huelva	17	1.585	265	280	850	190
Jaén	102	13.945	1.515	1.887	8.714	1.829
Málaga	261	35.841	5.117	3.747	20.652	6.325
Sevilla	212	29.453	5.655	6.844	11.259	5.695
<b>ANDALUCIA</b>	<b>2.526</b>	<b>164.504</b>	<b>31.926</b>	<b>24.719</b>	<b>81.268</b>	<b>26.591</b>
Palmas (Las)	159	2.599	172	267	1.397	763
S. C. Tenerife	306	2.931	423	588	1.374	546
<b>CANARIAS</b>	<b>465</b>	<b>5.530</b>	<b>595</b>	<b>855</b>	<b>2.771</b>	<b>1.309</b>
<b>ESPAÑA</b>	<b>17.994</b>	<b>2.326.567</b>	<b>356.761</b>	<b>294.408</b>	<b>1.201.069</b>	<b>474.329</b>

<sup>1</sup> No incluye el porcino ibérico

ENCUESTAS GANADERAS, 2025							
PORCINO IBERICO							
Análisis provincial del censo de animales por tipos, NOVIEMBRE 2025 (número de animales)							
Provincias y Comunidades Autónomas	Total animales	Lechones <sup>1</sup>	Cerdos de 20-49 kg (peso vivo)	Cerdos en cebo			
				Total cerdos de cebo (peso vivo)	De 50-79 kg	De 80-109 kg	> 109 kg
Coruña (La)	0	0	0	0	0	0	0
Lugo	0	0	0	0	0	0	0
Orense	0	0	0	0	0	0	0
Pontevedra	0	0	0	0	0	0	0
<b>GALICIA</b>	<b>0</b>	<b>0</b>	<b>0</b>	<b>0</b>	<b>0</b>	<b>0</b>	<b>0</b>
<b>P. DE ASTURIAS</b>	<b>105</b>	<b>0</b>	<b>0</b>	<b>105</b>	<b>35</b>	<b>35</b>	<b>35</b>
<b>CANTABRIA</b>	<b>0</b>	<b>0</b>	<b>0</b>	<b>0</b>	<b>0</b>	<b>0</b>	<b>0</b>
Alava	0	0	0	0	0	0	0
Guipúzcoa	0	0	0	0	0	0	0
Vizcaya	0	0	0	0	0	0	0
<b>PAIS VASCO</b>	<b>0</b>	<b>0</b>	<b>0</b>	<b>0</b>	<b>0</b>	<b>0</b>	<b>0</b>
<b>NAVARRA</b>	<b>0</b>	<b>0</b>	<b>0</b>	<b>0</b>	<b>0</b>	<b>0</b>	<b>0</b>
<b>LA RIOJA</b>	<b>0</b>	<b>0</b>	<b>0</b>	<b>0</b>	<b>0</b>	<b>0</b>	<b>0</b>
Huesca	25.620	24.120	0	1.500	0	1.500	0
Teruel	0	0	0	0	0	0	0
Zaragoza	2.027	1.278	0	0	0	0	0
<b>ARAGON</b>	<b>27.647</b>	<b>25.398</b>	<b>0</b>	<b>1.500</b>	<b>0</b>	<b>1.500</b>	<b>0</b>
Barcelona	2.191	1.406	0	12	0	0	12
Girona	0	0	0	0	0	0	0
Lleida	13.047	5.215	1.828	1.802	1.462	340	0
Tarragona	0	0	0	0	0	0	0
<b>CATALUÑA</b>	<b>15.238</b>	<b>6.621</b>	<b>1.828</b>	<b>1.814</b>	<b>1.462</b>	<b>340</b>	<b>12</b>
<b>BALEARES</b>	<b>0</b>	<b>0</b>	<b>0</b>	<b>0</b>	<b>0</b>	<b>0</b>	<b>0</b>
Ávila	83.463	5.063	18.688	58.688	15.442	21.426	21.820
Burgos	15.381	9.224	4.678	644	0	215	429
León	23.991	7	0	23.982	20.356	0	3.626
Palencia	0	0	0	0	0	0	0
Salamanca	565.578	98.805	112.032	304.780	94.073	80.467	130.240
Segovia	121.366	18.985	22.495	69.276	30.029	13.950	25.297
Soria	16.589	10.102	2.850	0	0	0	0
Valladolid	91.186	29.259	7.397	43.428	10.811	9.784	22.833
Zamora	88.727	36.655	7.745	39.399	6.990	9.048	23.361
<b>CASTILLA LEON</b>	<b>1.006.281</b>	<b>208.100</b>	<b>175.885</b>	<b>540.197</b>	<b>177.701</b>	<b>134.890</b>	<b>227.606</b>
<b>MADRID</b>	<b>0</b>	<b>0</b>	<b>0</b>	<b>0</b>	<b>0</b>	<b>0</b>	<b>0</b>
Albacete	67.944	3	1	66.619	22.204	22.211	22.204
Ciudad Real	34.174	9.770	4.408	16.009	4.798	4.098	7.113
Cuenca	27.861	3.614	5.906	14.252	7.734	5.549	969
Guadalajara	2.094	1.456	7	6	0	4	2
Toledo	117.270	19.117	19.708	62.962	21.761	20.385	20.816
<b>CASTILLA LA MANCHA</b>	<b>249.343</b>	<b>33.960</b>	<b>30.030</b>	<b>159.848</b>	<b>56.497</b>	<b>52.247</b>	<b>51.104</b>
Alicante	0	0	0	0	0	0	0
Castellón	1.921	1.200	0	0	0	0	0
Valencia	0	0	0	0	0	0	0
<b>C. VALENCIANA</b>	<b>1.921</b>	<b>1.200</b>	<b>0</b>	<b>0</b>	<b>0</b>	<b>0</b>	<b>0</b>
<b>R. DE MURCIA</b>	<b>171.211</b>	<b>21.187</b>	<b>12.067</b>	<b>123.663</b>	<b>41.268</b>	<b>46.230</b>	<b>36.165</b>
Badajoz	1.148.259	250.948	190.758	577.022	105.178	192.186	279.658
Cáceres	151.696	23.004	24.226	92.281	16.025	33.150	43.106
<b>EXTREMADURA</b>	<b>1.299.955</b>	<b>273.952</b>	<b>214.984</b>	<b>669.303</b>	<b>121.203</b>	<b>225.336</b>	<b>322.764</b>
Almería	37.798	17.273	4.366	9.634	1.150	5.025	3.459
Cádiz	48.410	15.084	11.036	13.533	6.126	2.572	4.835
Córdoba	225.877	29.444	29.447	146.343	16.018	55.006	75.319
Granada	38.290	4.380	8.890	21.806	7.322	7.174	7.310
Huelva	255.126	61.621	48.484	124.242	17.399	50.059	56.784
Jaén	24.733	13.390	1.829	4.427	1.830	1.410	1.187
Málaga	35.383	9.308	7.703	13.857	1.867	3.540	8.450
Sevilla	251.581	52.982	37.080	139.260	29.905	60.428	48.927
<b>ANDALUCIA</b>	<b>917.198</b>	<b>203.482</b>	<b>148.835</b>	<b>473.102</b>	<b>81.617</b>	<b>185.214</b>	<b>206.271</b>
Palmas (Las)	141	41	5	25	12	13	0
S. C. Tenerife	0	0	0	0	0	0	0
<b>CANARIAS</b>	<b>141</b>	<b>41</b>	<b>5</b>	<b>25</b>	<b>12</b>	<b>13</b>	<b>0</b>
<b>ESPAÑA</b>	<b>3.689.040</b>	<b>773.941</b>	<b>583.634</b>	<b>1.969.557</b>	<b>479.795</b>	<b>645.805</b>	<b>843.957</b>

<sup>1</sup> Cerdos con un peso vivo inferior a 20 Kg.

ENCUESTAS GANADERAS, 2025						
PORCINO IBERICO						
Análisis provincial del censo de animales por tipos, NOVIEMBRE 2025 (número de animales)						
Provincias y Comunidades Autónomas	Verracos	Total Cerdas Reproductoras	Cerdas Reproductoras			
			Nunca han parido		Han parido	
			Cerdas todavía no cubiertas	Cerdas cubiertas por 1ª vez	Cerdas cubiertas más veces	Cerdas criando o en reposo
Coruña (La)	0	0	0	0	0	0
Lugo	0	0	0	0	0	0
Orense	0	0	0	0	0	0
Pontevedra	0	0	0	0	0	0
<b>GALICIA</b>	<b>0</b>	<b>0</b>	<b>0</b>	<b>0</b>	<b>0</b>	<b>0</b>
<b>P. DE ASTURIAS</b>	<b>0</b>	<b>0</b>	<b>0</b>	<b>0</b>	<b>0</b>	<b>0</b>
<b>CANTABRIA</b>	<b>0</b>	<b>0</b>	<b>0</b>	<b>0</b>	<b>0</b>	<b>0</b>
Alava	0	0	0	0	0	0
Guipúzcoa	0	0	0	0	0	0
Vizcaya	0	0	0	0	0	0
<b>PAIS VASCO</b>	<b>0</b>	<b>0</b>	<b>0</b>	<b>0</b>	<b>0</b>	<b>0</b>
<b>NAVARRA</b>	<b>0</b>	<b>0</b>	<b>0</b>	<b>0</b>	<b>0</b>	<b>0</b>
<b>LA RIOJA</b>	<b>0</b>	<b>0</b>	<b>0</b>	<b>0</b>	<b>0</b>	<b>0</b>
Huesca	0	0	0	0	0	0
Teruel	0	0	0	0	0	0
Zaragoza	4	745	0	2	533	210
<b>ARAGON</b>	<b>4</b>	<b>745</b>	<b>0</b>	<b>2</b>	<b>533</b>	<b>210</b>
Barcelona	4	769	39	122	449	159
Girona	0	0	0	0	0	0
Lleida	9	4.193	607	677	2.083	826
Tarragona	0	0	0	0	0	0
<b>CATALUÑA</b>	<b>13</b>	<b>4.962</b>	<b>646</b>	<b>799</b>	<b>2.532</b>	<b>985</b>
<b>BALEARES</b>	<b>0</b>	<b>0</b>	<b>0</b>	<b>0</b>	<b>0</b>	<b>0</b>
Avila	17	1.007	170	51	565	221
Burgos	100	735	29	57	429	220
León	1	1	0	0	0	1
Palencia	0	0	0	0	0	0
Salamanca	1.052	48.909	6.502	5.236	26.834	10.337
Segovia	62	10.548	889	1.252	6.354	2.053
Soria	21	3.616	181	313	2.346	776
Valladolid	93	11.009	994	1.228	6.479	2.308
Zamora	56	4.872	411	532	2.003	1.926
<b>CASTILLA LEON</b>	<b>1.402</b>	<b>80.697</b>	<b>9.176</b>	<b>8.669</b>	<b>45.010</b>	<b>17.842</b>
<b>MADRID</b>	<b>0</b>	<b>0</b>	<b>0</b>	<b>0</b>	<b>0</b>	<b>0</b>
Albacete	5	1.316	706	605	3	2
Ciudad Real	72	3.915	245	420	2.422	828
Cuenca	0	4.089	310	67	2.224	1.488
Guadalajara	4	621	73	52	347	149
Toledo	125	15.358	1.931	1.637	8.302	3.488
<b>CASTILLA LA MANCHA</b>	<b>206</b>	<b>25.299</b>	<b>3.265</b>	<b>2.781</b>	<b>13.298</b>	<b>5.955</b>
Alicante	0	0	0	0	0	0
Castellón	2	719	96	65	361	197
Valencia	0	0	0	0	0	0
<b>C. VALENCIANA</b>	<b>2</b>	<b>719</b>	<b>96</b>	<b>65</b>	<b>361</b>	<b>197</b>
<b>R. DE MURCIA</b>	<b>59</b>	<b>14.235</b>	<b>1.948</b>	<b>1.950</b>	<b>6.665</b>	<b>3.672</b>
Badajoz	4.810	124.721	18.423	7.023	61.807	37.468
Cáceres	324	11.861	1.419	1.880	5.456	3.106
<b>EXTREMADURA</b>	<b>5.134</b>	<b>136.582</b>	<b>19.842</b>	<b>8.903</b>	<b>67.263</b>	<b>40.574</b>
Almería	43	6.482	581	914	3.514	1.473
Cádiz	285	8.472	952	871	4.176	2.473
Córdoba	953	19.690	2.729	1.532	9.589	5.840
Granada	69	3.145	235	531	1.683	696
Huelva	1.327	19.452	2.584	3.961	7.609	5.298
Jaén	39	5.048	608	775	2.590	1.075
Málaga	127	4.388	804	560	1.889	1.135
Sevilla	561	21.698	4.960	2.710	8.789	5.239
<b>ANDALUCIA</b>	<b>3.404</b>	<b>88.375</b>	<b>13.453</b>	<b>11.854</b>	<b>39.839</b>	<b>23.229</b>
Palmas (Las)	6	64	12	0	42	10
S. C. Tenerife	0	0	0	0	0	0
<b>CANARIAS</b>	<b>6</b>	<b>64</b>	<b>12</b>	<b>0</b>	<b>42</b>	<b>10</b>
<b>ESPAÑA</b>	<b>10.230</b>	<b>351.678</b>	<b>48.438</b>	<b>35.023</b>	<b>175.543</b>	<b>92.674</b>



Aviso Legal: los contenidos de esta publicación podrán ser reutilizados, citando la fuente y la fecha, en su caso, de la última actualización.

**Título:**

Resultados de las encuestas de ganado porcino

**Edita:**

© Ministerio de Agricultura, Pesca y Alimentación.  
Secretaría General Técnica. Centro de Publicaciones.

**Unidad proponente:**

Subsecretaría de Agricultura, Pesca y Alimentación.  
Subdirección General de Análisis, Coordinación y Estadística

**NIPO:** 003-22-137-5

**Tienda online:**

[www.mapa.gob.es](http://www.mapa.gob.es)  
<https://servicio.mapa.gob.es/tienda/>

**e-mail:**

[centropublicaciones@mapa.es](mailto:centropublicaciones@mapa.es)

**Catálogo de Publicaciones de la Administración General del Estado:**

<https://cpage.mpr.gob.es/>

 GOBIERNO DE ESPAÑA	MINISTERIO DE AGRICULTURA, PESCA Y ALIMENTACIÓN	SUBSECRETARÍA
		SECRETARÍA GENERAL TÉCNICA