



Better Training for Safer Food BTFSF

Contingency Planning

Fred Landeg CBE BVetMed MRCVS



BETTER TRAINING FOR SAFER FOOD

BTSF

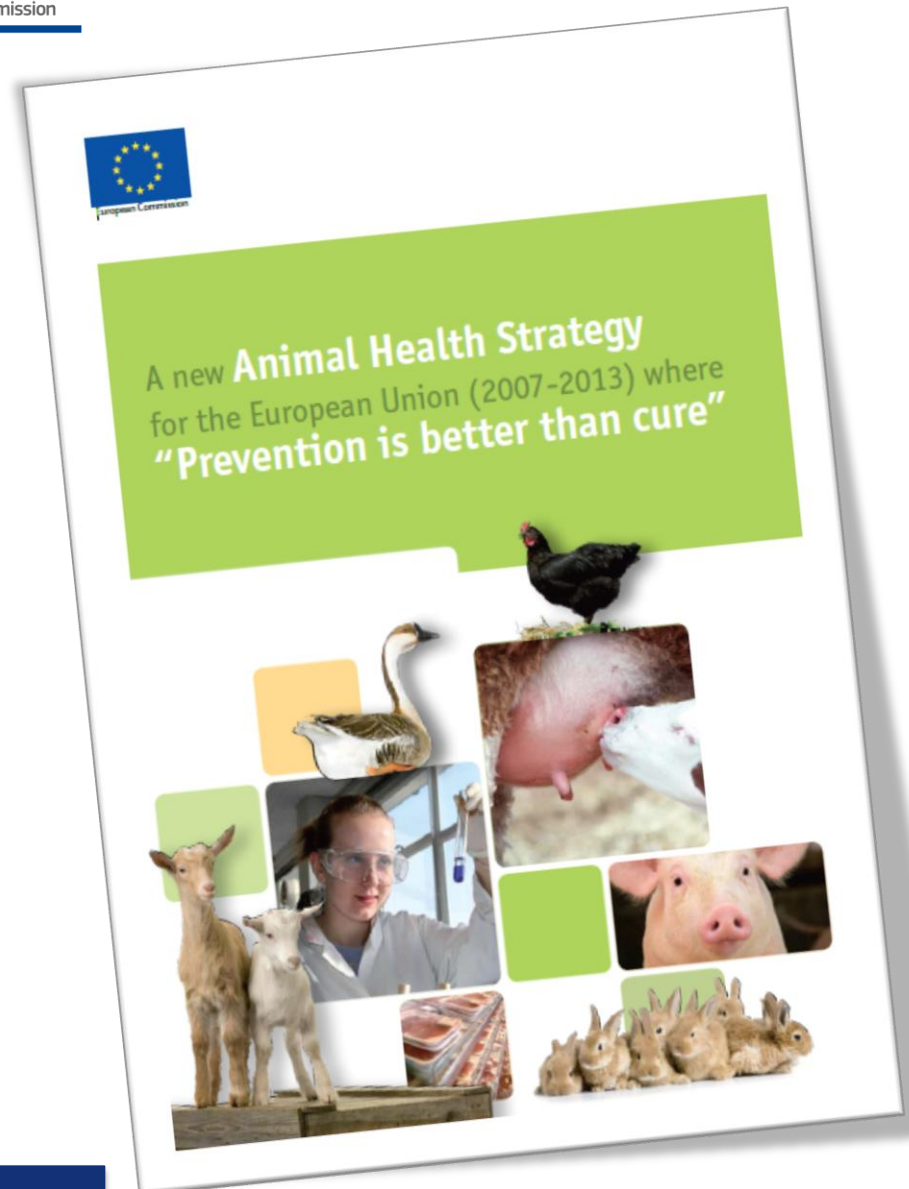
Contingency Planning - Outline

- *Prevention*
 - Border controls
 - Traces database
 - Surveillance
 - On farm biosecurity
 - Emergency preparedness at all levels
- *Planning*

“Prevention is better than cure”

Prevention

- **Border controls**
- **Traces database**
- **Surveillance**
- **On farm biosecurity**
- **Emergency preparedness at all levels**





Border Controls

- Revision of import legislation:
Risk-based approach to border inspections - (targeting illegal trade)
- Coordination of agencies/services regulating imports (customs/veterinary services)
- Risk management at third/neighbouring country level
- Buffer zones in an outbreak

Traces (Trade control and Expert System) Single Portal for all Veterinary Matters

- *Wider and integrated electronic system, with a unified database including certification, animal identification, and health and welfare status*
- *Interoperability for national identification databases*
- *Electronic identification*
- *Electronic certification to replace paper certification for movements and imports of live animals and products of animal origin*

National Identification Databases

- *Land, Holdings, Linked Holdings, Animals, Movements – Small holdings and Hobby Keepers*
- *Interoperability for TRACES*
- *Electronic identification*
- *Electronic certification to replace paper certification for movements and imports of live animals and products of animal origin*

Disease Surveillance

- *Targeted v Scanning Surveillance*
- *Early Warning Systems & State of Readiness*
- *Global OIE*
- *National*
- *Education of Livestock Keepers*
- *Notifiable Disease*



On Farm Biosecurity

-Cleansing and Disinfection

People, vehicles, things

-Approved disinfectant

-Buying-in Policy

-Loading/Unloading Bays

-Isolation – Quarantine

-Movement standstill

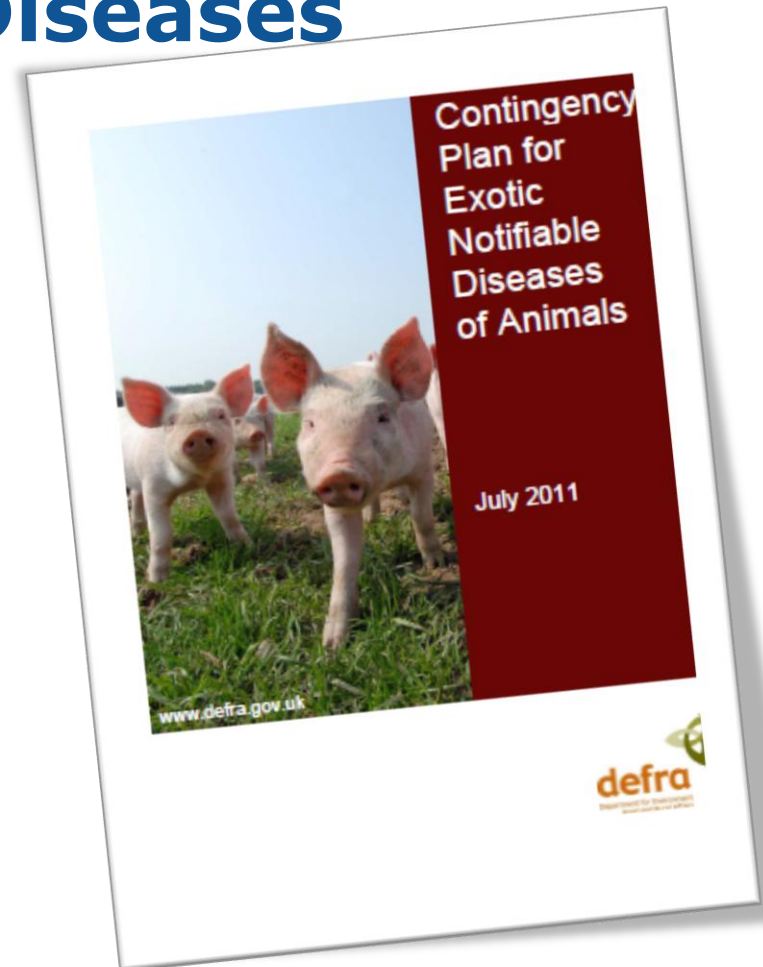
-Training



Contingency Planning for Infectious Animal* Diseases

Planning

- Stakeholder involvement
- Legal Base
- Expert Knowledge
- Planning Levels
- Content
- Command and Control
- Communication
- Practice & Flexibility



Stakeholder involvement

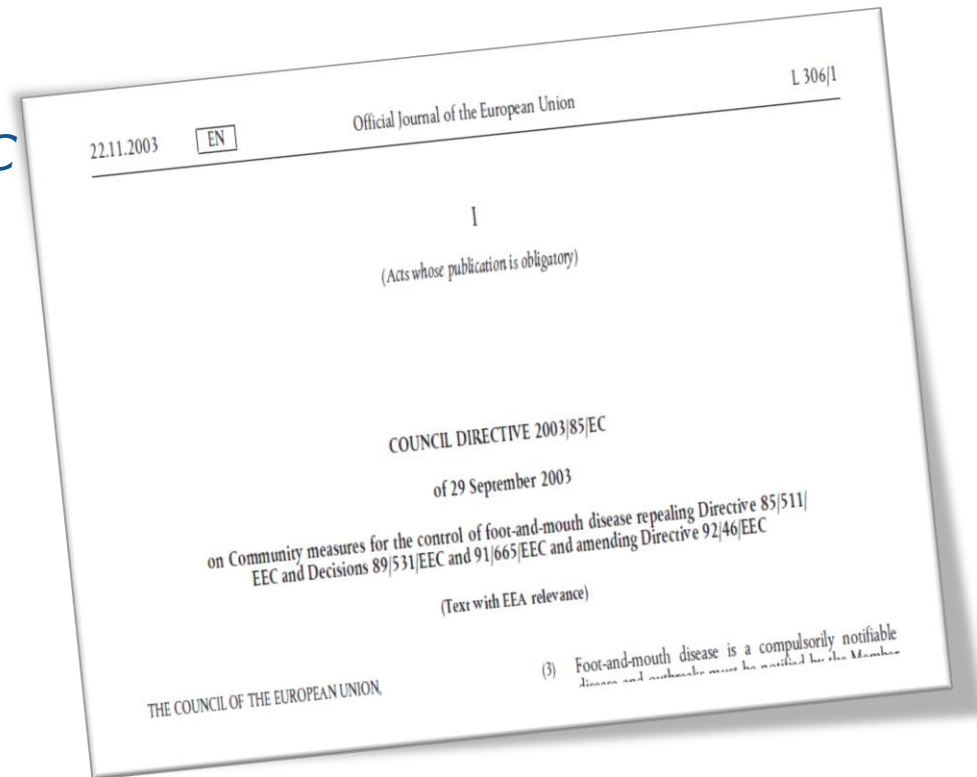
- Producers, processors and retailers
- Must be involved at the start and in exercises and the review process
- Insight on how industry operates and current practices
- Provide reality check on control measures
- Awareness of controls and how they will be affected
- Can prepare relevant their own contingency plans



Legal Base for Contingency Planning

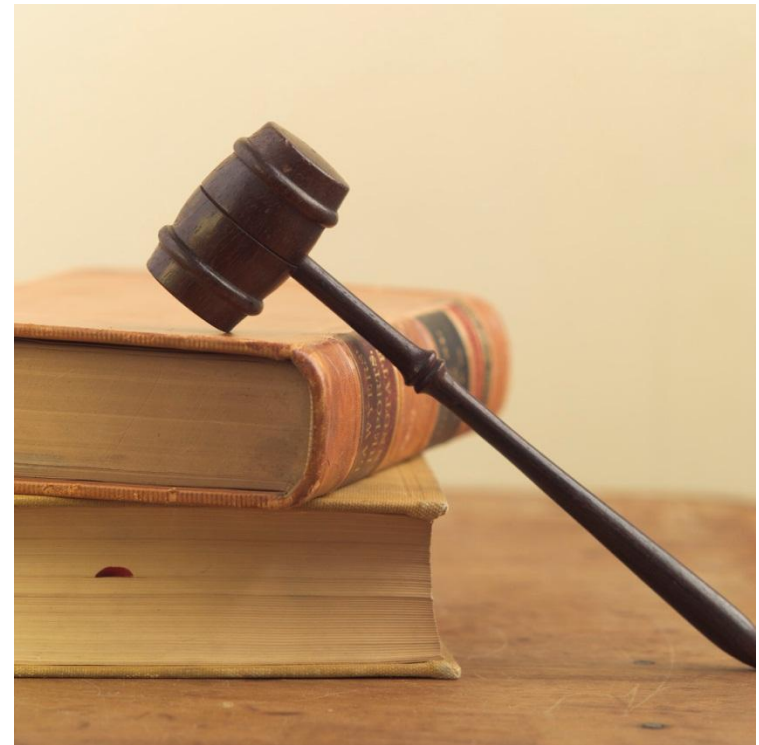
Council Directive 2003/85/EC

- Community Measures for the Control of FMD
- Annex XVII
- “Member States shall ensure that contingency plans meet at least the following requirements:”
- National Legislation



National legislation to implement contingency plan

- *EU Framework*
- *National laws*
- *All necessary powers to implement contingency plan*
- *Broad Enabling powers to allow for flexibility and the unexpected*
- *Problems of legal challenge*

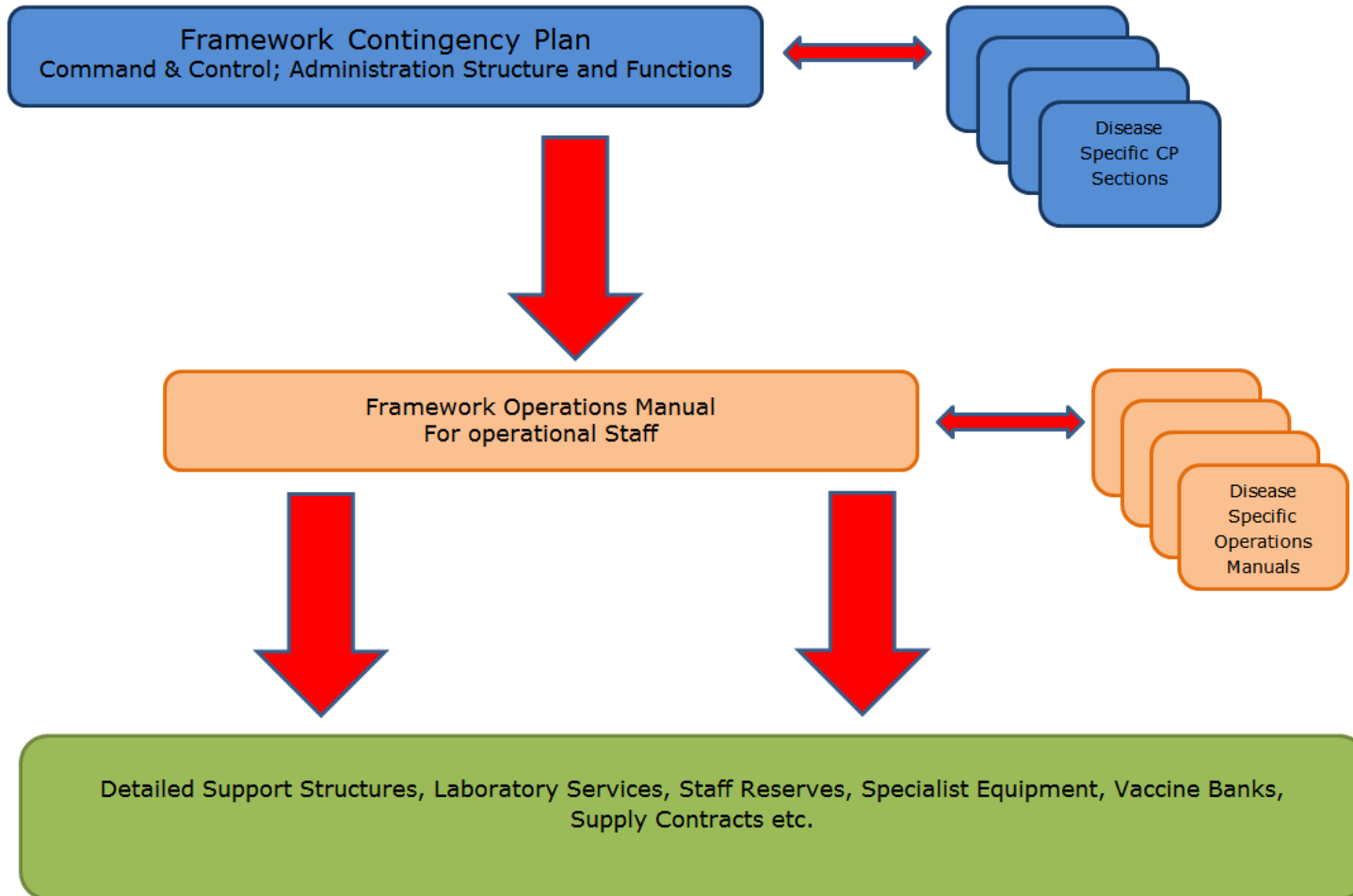


Finance

- *Access to Emergency Funds to fight and eradicate the disease*
- *Promptly Pay Compensation*
 - **Cost Sharing**
 - **Levies**



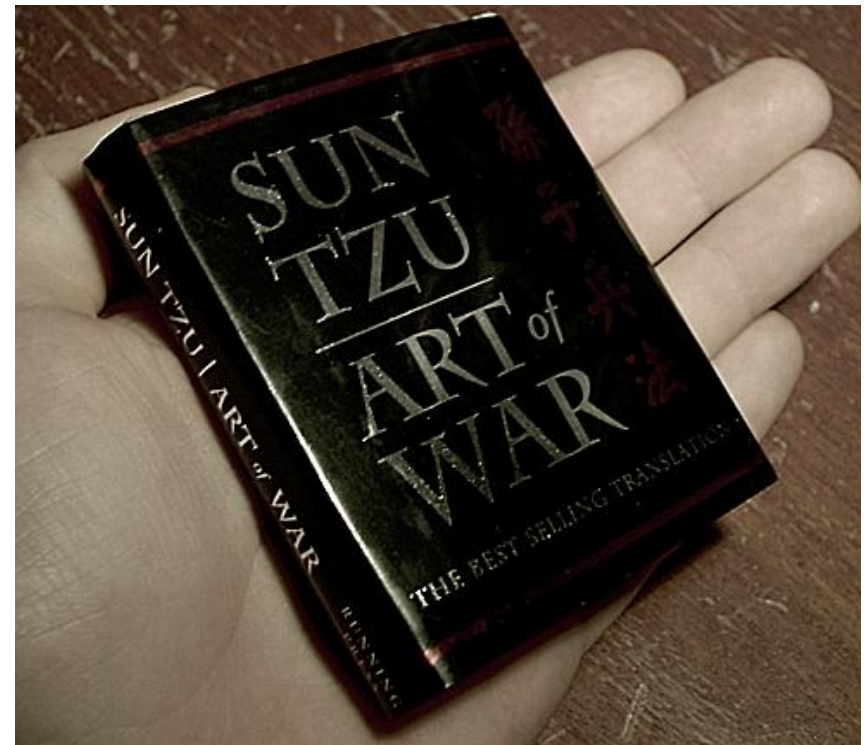
Scope and Detail of Contingency Plans



“Know Your Enemy” Sun Tzu c.512BC

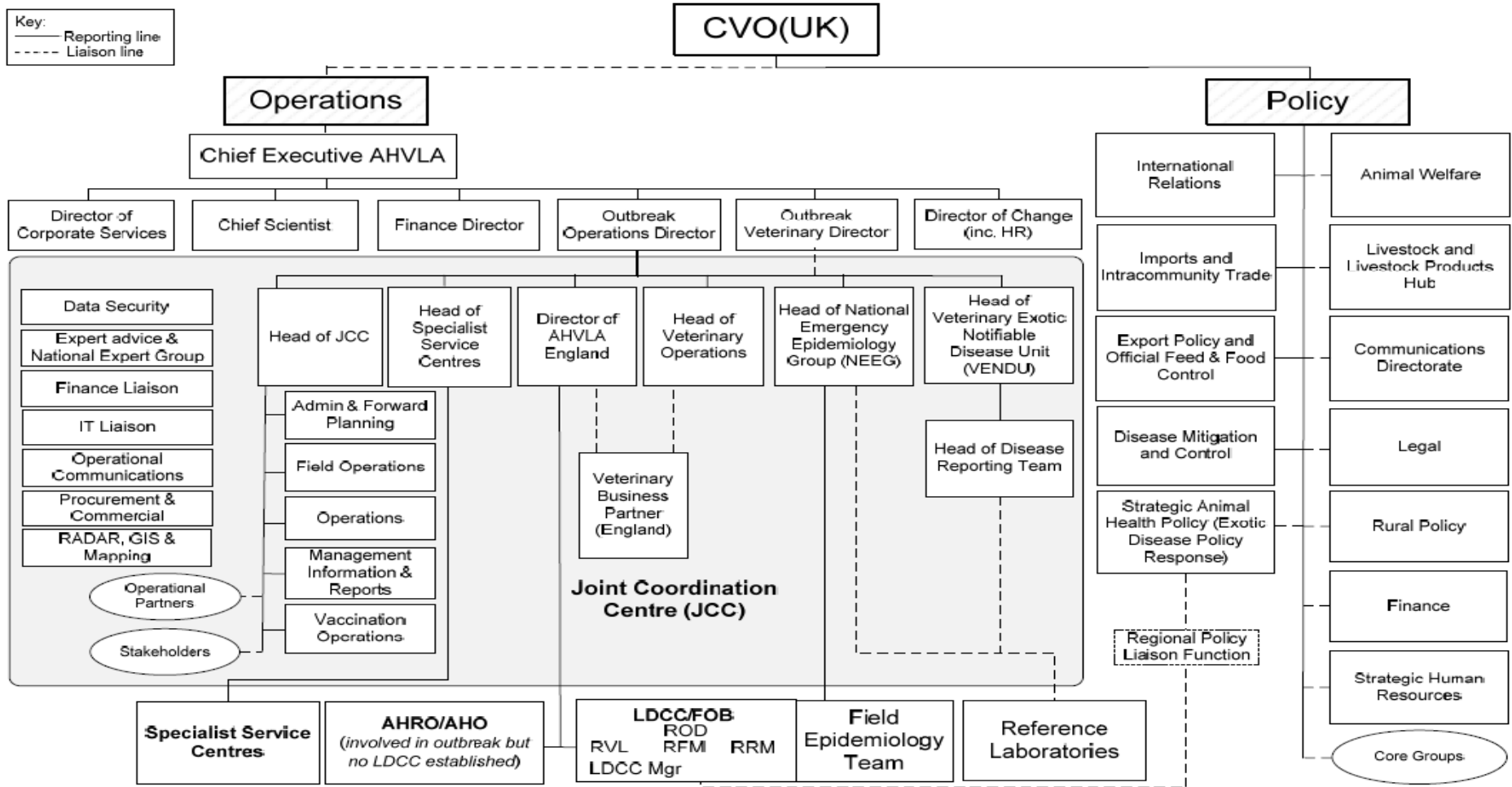
Detailed Veterinary Knowledge is Essential for Effective Science Based Control

- **Aetiology**
- **Transmission and Epidemiology**
- **Pathogenesis**
- **Clinical Findings**
- **Laboratory Diagnostics**
- **Control**
- **Molecular Epidemiology**

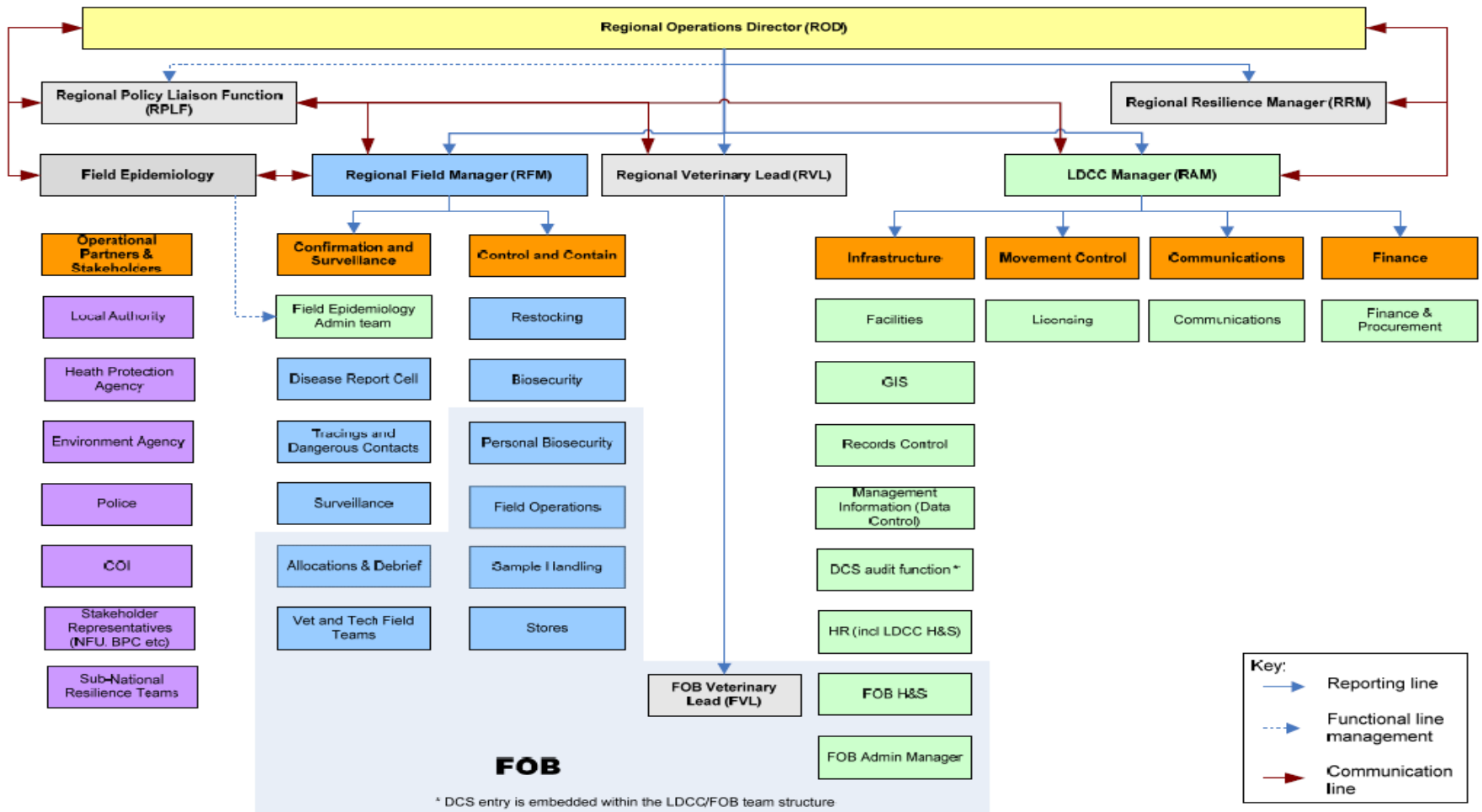


Command and Control- NDCC

Key:
 — Reporting line
 - - - - - Liaison line



Local Disease Control Centres



Expert Group

"A permanently operational group shall be created, where necessary in collaboration with other Member states, to maintain expertise and assist the relevant authority in qualitative disease preparedness"



Carcase Disposal

Identification of sites

Leak proof enclosed transport



Environmental Protection

*Plan without prejudice to
veterinary requirements with*

*Minimum risk to soil, air,
surface and groundwater,
plants and animals*

*Minimum nuisance through
noise and odours*

*Minimum adverse effect to
the countryside or places of
special interest.*



Worst case scenario planning

Plan for the worst; hope for the best.

Multiple outbreaks different strains; diseases; bio-terrorism

Specialist Equipment – Welfare at killing Regulation 1099/2009

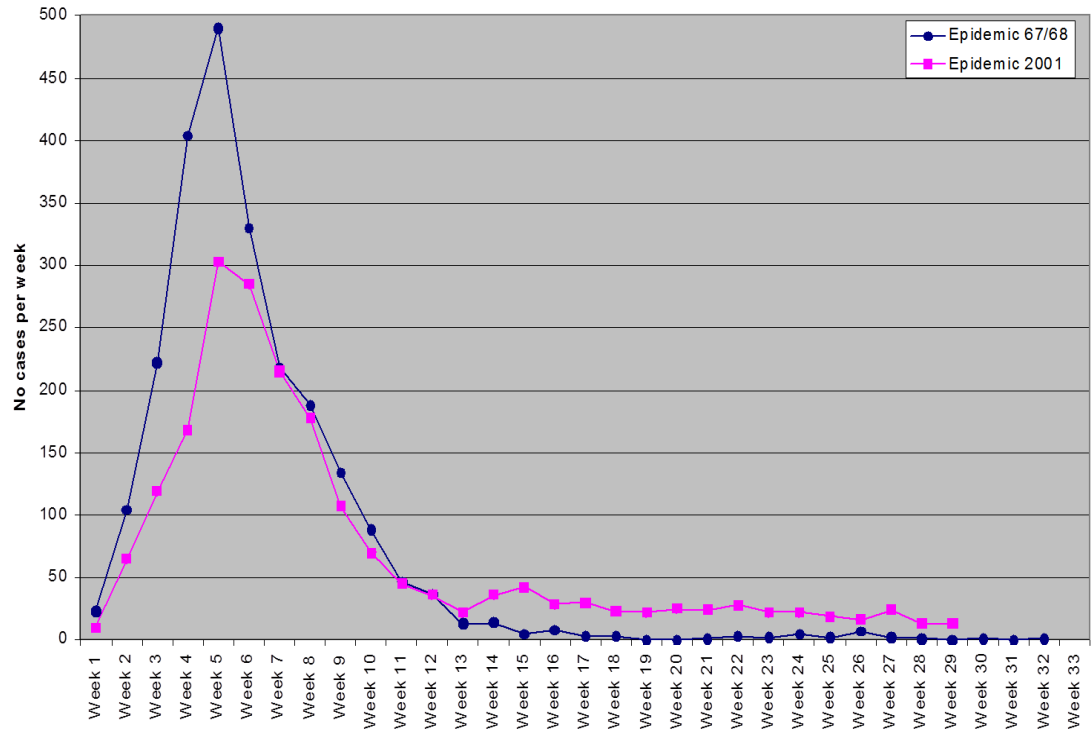
Standby staff to take account of lead in time to ramp up resources

Laboratory Resources

Vaccine banks

Vaccination plan

Comparison of Epidemics





European
Commission



Communication - Skills



'We would rather die than let them kill our flock'

Sandra Barwick finds that Britain's sheep farmers are opposed to the Government policy of mass slaughter

BRIAN and Josephine Wheatley, tenant farmers in Cumbria with 1,200 ewes, said yesterday they would rather die than see their healthy ewes slaughtered.

"We will not accept it," said Mr Wheatley. "We will do our best to fight them at the farm gates if we have to, I would rather be dead than come back to an empty farm."

"They would have to build new jails to put farmers in. They would have to bring troops in to deal with us, not the animals, if they want to carry it out. That's what everyone is saying."

The Wheatleys, who farm at Ingleswood, near Penrith, have built up their herd over 20 years from only 50 ewes.

kill the healthy sheep unless they get their act together."

They have 200 lambs at the moment and, in another three weeks, lambing will start in earnest, with possibly 2,000 more to come. They will be in the fields up to 20 hours, every day because they cannot move the ewes into the shed. This lambing represents their income for the next 12 months.

Compensation is not the issue but it is also true that, if their stock is slaughtered, it will be six months before they can restock and 18 months before they have any income. They could not survive for that period.

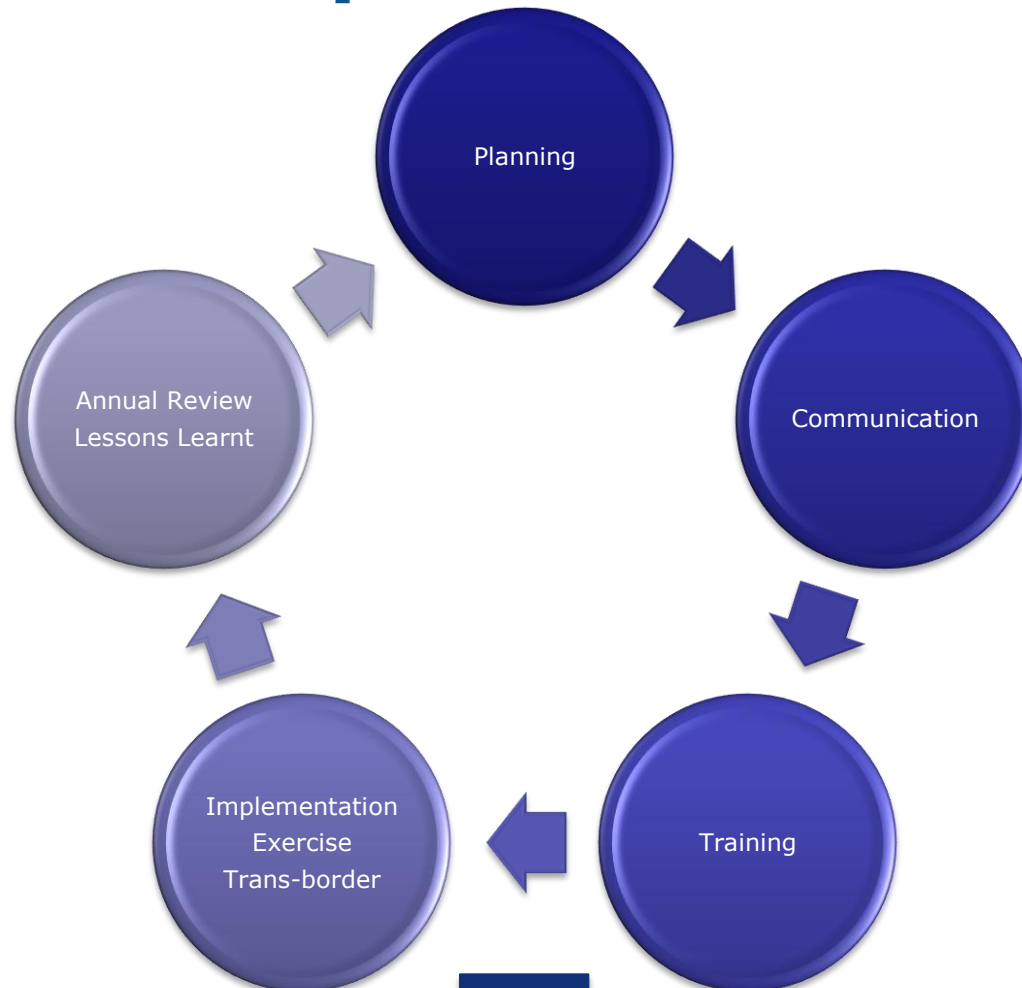
The Wheatleys believe that the effect of the slaughter will make sheep prices rise by up to three times



Farmer Support Helplines



Keep Plans Up to Date



Successful Exit Strategy

- *Expect the Unexpected*
- *Be Flexible*
- *Endurance*
- *Resource costs of exit strategy may be high and place the greatest demand on laboratory resources*
- *Time*
- *Plan for next outbreak*

