



## January 2014

## CONTENTS

- |                                                        |                                            |
|--------------------------------------------------------|--------------------------------------------|
| 1. Macro magnitudes                                    | 8. Food, beverages & tobacco manufacturing |
| 2. Employment                                          |                                            |
| 3. Consumer prices. Selling and purchase prices. Wages | 9. Consumption, wholesaling and retailing  |
| 4. External trade                                      | 10. Fisheries and aquaculture              |
| 5. Agricultural production                             | 11. Rural areas                            |
| 6. International markets                               | 12. Forestry sector                        |
| 7. Agricultural Policy and Debt levels                 | 13. Environment                            |

**Analysis: The Spanish production, manufacturing and household expenditure of fishery products in 2012 and their comparison with 2008.**

The **Spanish fishing fleet** occupies the third position in the European Union (EU), with 10,116 ships in 2012. The total capacity was 384,796 GT (Gross Ton), with a total power of 1,185,861 kW and a average length of 10.9 m. The fishing fleet average size is 38,1 GT and the average power 117,2 kW. In the UE, these indicators are lower than in Spain: 20.2 GT and 77.1 kW in average. Regarding the type of fishing ship, the 73% of the total capacity was formed with trawlers and seiners, which account only for the 18% of the total number of vessels. The 4% of the Spanish fleet operate in the EU or international fishing grounds, representing the 60% of the total capacity. The 75% of the total fishing fleet and the 7% of the total capacity is made up to small ships equipped with traditional fishing arts.

Spain is the first country in the UE regarding the total volume of **catches**, with 812,652 tonnes in 2012, that reached a total value of 1,784 million euro. Catches have decreased in average, each year, by 2,1% in volume and 1,1% in value, between 2008 and 2012.

The Spanish fisheries **factor income** in 2012 reached 805.1 million euro, having increased by 3.8% annual on average since 2009.

The **international trade balance** of fish products is traditionally negative in Spain. Imports are bigger than exports in 1,700 million euro (moving year data in oct.2013).

The processing and preserving **industry** of fish, crustaceans and molluscs had a turnover in 2012 of 4,533 million euro, with an mean annual variation of 2.3% between 2008 and 2012.

The annual **household expenditure** in fish products was 8,857 million euro in 2012, with an annual average decrease of 1.8% since 2008.

*More information available in the Spanish version of this report*

Main Economic Indicators for Agriculture and Manufacturing of Food, Beverages and Tobacco					
Indicator	Period	Sector	Value	Inter-annual variation	%/Total Spain
GVA Millions €	2012	Total	944,219	-1.6%	100.0%
		Agricultural	23,215	-2.9%	2.5%
		FBT Industry	27,582	12.0%	2.9%
Employed thousand people	IV Q 2013	Total	16,758.2	-1.2%	100.0%
		Agricultural	790.9	0.9%	4.7%
		FBT Industry	449.4	1.7%	2.7%
Unemployment Rate (%)	2013	Total	26.0%*	0.0	
		Agricultural	23.9%*	-1.5	
		FBT Industry	12.8%*	0.6	

(\*) The difference between two percentages is expressed as percentage points differential.

Agriculture sector: Agriculture, Livestock, Fisheries and Forestry.

FBT: Food, Beverages and Tobacco Industry

GVA: Gross value added.

Data Source: INE (National Statistics Institute, Spain)

National accounts and Labour Force Survey.

## MAIN INDICATORS SUMMARY

Last year / period / month available. In parentheses: Inter-annual variation

<b>Agricultural Output</b> (Economic Accounts for Agriculture) 44,271.4 million €, 2013 2nd Estimate (+4.9%)	<b>Trade Balance of Agro-Food Industry</b> 7,473 million €, dec.12-nov.13 (+43.4%)	<b>Household Food Consumption (Value)</b> 69,257.3 million €, Nov.12-Oct. 13 (+2.7%)
<b>Gross Value Added</b> (Economic Accounts for Agriculture) 23,311.8 million €, 2013 2nd Estimate (+8.3%)	<b>Cereal Production Forecast</b> 25,1 million tonnes -provisional 2013- (+44.3%)	<b>Agro-food Trade Turnover</b> 145,106 million €, 2012 (-0.1%)
<b>Factor Income</b> (Economic Accounts for Agriculture) 24,320.7 million €, 2013 2 <sup>a</sup> Est. (+7.7%)	<b>Vineyard Production Forecast</b> 46.648,2 thousand hectolitres Wine + Grape Must, provisional 2013 (+30.4%)	<b>Fisheries Factor Income</b> 805.1 million €, 2012 (+4.5%)
<b>Employed people in Primary Sector</b> (Agriculture, Livestock, Forestry and Fisheries) 790,900 people, IV Q 2013 (+0.88%)	<b>Olive Oil Production Forecast</b> 1,545.0 thousand t., provisional 2013 (+152.7%)	<b>Total Fish Catches (Volume)</b> 813,199 t, 2012 (+0.2% over/08 to 12 average)
<b>Unemployment Rate in Primary Sector</b> 23.89%, IV Q 2013 (-1.54 percentage points)	<b>Soft Wheat international price (FAO)</b> 255.9 \$/t., January 2014, (-17.7%)	<b>Population in Rural Municipalities</b> 8,126,721 inhabitants, 2013 (-0.84% from 2008)
<b>Employed people in Manufacturing of Food, Beverages and Tobacco</b> 449,400 people, IV Q 2013 (+1.72%)	<b>European Agricultural Guarantee Fund (EAGF) Total Expenditure, Spain</b> 5,810.9 million €, budgetary year 2013 (+0.4%)	<b>Population in Small Rural Municipalities</b> 4,744,670 inhabitants, 2013 (-1.92% from 2008)
<b>Unemployment Rate in Manufacturing of Food, Beverages and Tobacco</b> 12.77%, IV Q 2013 (+0.59 p.p.)	<b>Total Loan Agriculture, Livestock and Forestry.</b> Fisheries and aquaculture non included 16,976 million €, III Q 2013 (-10.2%)	<b>Forestry &amp; Logging and Wood &amp; Paper Manufacturing GVA</b> 6,637 million €, 2009(prov.), (-19.1%)
<b>CPI (Food and Non-Alcoholic Beverages)</b> 2.8% inter annual, 2013 average (+0.5 p.p.)	<b>Net Amount Turnover of Manufacturing of Food, Beverages and Tobacco</b> 102,859 million €, 2012 (1.0%)	<b>Greenhouse Gas Emissions</b> 346,062 Kt CO <sub>2</sub> . 2012 (-1.6%)
<b>Price Received Global Index</b> 116.9 (2005=100) in august 2013 (+11.8%)	<b>Production Index (IPI). Food Industry</b> 98.2 (2010=100), average Jan.-Nov. 2013 (+0.5%)	<b>Greenhouse Gas Emissions /1990</b> 19.4 % (2012 data)
<b>Commonly Used Goods Price Paid Index</b> 137.5 (2005=100) in august 2013 (-3.9%)	<b>Price Index (IPRI) Food Industry</b> 114.4 (2010=100), average Jan.-Nov 2013 (+3.5%)	<b>Electricity Production with Renewable Energy</b> 113,136 GWh. 2013 (28.2%)

S.G. Analysis, Prospective and Coordination: <http://www.magrama.gob.es/es/ministerio/servicios/analisis-y-prospectiva/default.aspx>

Mail: [sgapc@magrama.es](mailto:sgapc@magrama.es). The content of this report may be reproduced total o partially, providing data source is stated. Document must be referenced as:

"Analysis and Prospective - Indicators Series no. 13, January 2014". Published by: Ministry of Agriculture, Food and Environment. NIPO: 280-14-030-4

State General Administration Publications Catalogue: <http://publicacionesoficiales.boe.es>

**1. AGRICULTURAL MACRO MAGNITUDES.** The total production value of agriculture consolidates Spain as the country with the highest agricultural added value in the UE (expressed in constant prices of 2005).

**Macro magnitudes of Agriculture at constant prices of 2005**

(VALUE year n = PRICE year 2005 x VOLUME year n)

Value expressed in million euro, calculated with prices of 2005	EU-15			SPAIN			FRANCE			GERMANY			ITALY		
	2013	Average 08 to 12	Var. (%) 2013/12	2013	Average 08 to 12	Var. (%) 2013/12	2013	Average 08 to 12	Var. (%) 2013/12	2013	Average 08 to 12	Var. (%) 2013/12	2013	Average 08 to 12	Var. (%) 2013/12
<b>Output of Agriculture (O.A)</b>	295,194	290,746	0.36%	45,994	45,003	4.12%	63,123	63,882	-0.27%	50,697	44,563	-0.17%	40,940	42,446	-0.60%
O.A. Member State/EU-15 (%)	100.0%	100.0%	0.00%	15.6%	15.5%	3.74%	21.4%	22.0%	-0.63%	17.2%	15.3%	-0.53%	13.9%	14.6%	-0.95%
<b>Intermediate Consumption (I.C.)</b>	157,359	153,763	0.35%	15,284	15,100	0.56%	34,658	34,604	0.66%	31,833	28,089	0.13%	16,629	17,172	-1.13%
Energy & lubricants	15,490	15,153	0.88%	1,239	1,260	1.16%	2,769	2,742	0.50%	3,669	3,163	2.50%	1,880	1,950	-1.60%
<b>Gross Value Added (GVA)</b>	139,433	138,243	0.63%	31,109	30,278	7.53%	28,111	29,213	-1.60%	18,598	16,190	-0.83%	24,274	25,256	-0.12%
GVA Member State/ GVA EU-15 (%)	100.0%	100.0%	0.00%	22.3%	21.9%	6.86%	20.2%	21.1%	-2.22%	13.3%	11.7%	-1.45%	17.4%	18.3%	-0.74%
<b>Indicator A</b>	118.2	110.5	-1.09%	112.0	97.0	10.02%	114.3	117.6	-16.45%	126.7	127.6	-10.01%	100.9	92.6	8.96%

**STRUCTURAL DATA**

	2013	Average 08 to 12	Var. (%)	2013	Average 08 to 12	Var. (%)	2013	Average 08 to 12	Var. (%)	2013	Average 08 to 12	Var. (%)	2013	Average 08 to 12	Var. (%)
Labour Force (thousand AWU)	4,971.5	5,237.2	-1.68%	865.3	928.0	-2.48%	775.7	813.7	-2.00%	535.0	530.1	-0.19%	1,064.0	1,140.0	-1.85%
UAA (thousand ha)	123,218	123,838	--	23,753	24,323	--	27,837	27,657	--	16,704	16,818	--	12,856	12,800	--

**MACRO MAGNITUDES COMPOSITION**

	EU-15	SPAIN	FRANCE	GERMANY	ITALY										
I.C / O.A (%)	53.3%	52.9%	0.00	33.2%	33.6%	-1.18	54.9%	54.2%	0.51	62.8%	63.0%	0.19	40.6%	40.5%	-0.22
En. & Lub. / O.A (%)	5.2%	5.2%	0.03	2.7%	2.8%	-0.08	4.4%	4.3%	0.03	7.2%	7.1%	0.19	4.6%	4.6%	-0.05

**PRODUCTIVITY INDICATORS**

	EU-15	SPAIN	FRANCE	GERMANY	ITALY										
GVA ÷ AWU (€/AWU)	28,047	26,396	2.35%	35,951	32,627	10.27%	36,239	35,903	0.40%	34,763	30,544	-0.64%	22,814	22,154	1.76%
GVA ÷ ha (€/ha.UAA)	1,132	1,116	0.63%	1,310	1,245	7.53%	1,010	1,056	-1.60%	1,113	963	-0.83%	1,888	1,973	-0.12%

Source: EUROSTAT. The differences between percentages are showed in "percentage points"

Macro magnitudes: Economic accounts for agriculture - values at constant prices (2005 = 100) [aact\_eaa03] [http://appsso.eurostat.ec.europa.eu/nui/show.do?dataset=aact\\_eaa03&lang=en](http://appsso.eurostat.ec.europa.eu/nui/show.do?dataset=aact_eaa03&lang=en)

Indicator A (2005=100): Agricultural income (indicators A, B, C) [aact\_eaa06] [http://appsso.eurostat.ec.europa.eu/nui/show.do?dataset=aact\\_eaa06&lang=en](http://appsso.eurostat.ec.europa.eu/nui/show.do?dataset=aact_eaa06&lang=en)

NOTE: Indicator A is the only macro magnitude of this table which is not expressed at constant prices. It is an index (2005=100) that measures Factor Income evolution expressed in Real Terms (deflated by GDP Price Index) divided by the number of Annual Working Units (AWU).

Utilised Agricultural Area (UAA): Survey on the Structure of Agricultural Holdings [ef\_kvaareg] [http://appsso.eurostat.ec.europa.eu/nui/show.do?dataset=ef\\_kvaareg&lang=en](http://appsso.eurostat.ec.europa.eu/nui/show.do?dataset=ef_kvaareg&lang=en)

Labour Input (AWU): Agricultural Labour Input Statistics : absolute figures. [aact\_ali01] [http://appsso.eurostat.ec.europa.eu/nui/show.do?dataset=aact\\_ali01&lang=en](http://appsso.eurostat.ec.europa.eu/nui/show.do?dataset=aact_ali01&lang=en)

**2. EMPLOYMENT.** The employed interannual growth and the fall in the number of actives propel a strong fall in unemployment in the agricultural sector (-7.2%)

Labour Force Survey (LFS)  
,000 people

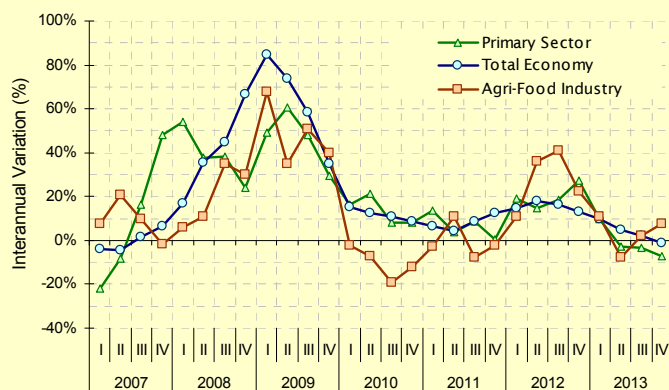
	2012	2013	2013	f/ previous Q. (%)*	f/ previous year (%)*
	IV Q	III Q	IV Q		
<b>TOTAL</b>					
Active	22,922.4	22,728.0	22,654.5	-0.32%	-1.17%
Employed	16,957.1	16,823.2	16,758.2	-0.39%	-1.17%
Full-time	14,358.4	14,237.2	14,019.1	-1.53%	-2.36%
Part-time	2,598.7	2,586.0	2,739.1	5.92%	5.40%
Unemployed	5,965.3	5,904.8	5,896.3	-0.14%	-1.16%
Unemployment rate	26.02%	25.98%	26.03%	0.05	0.00
<b>Primary Sector: Agriculture, Livestock, Forestry and Fisheries</b>					
Active	1,051.3	993.8	1,039.1	4.56%	-1.16%
Employed	784.0	705.6	790.9	12.09%	0.88%
Full-time	716.5	647.1	714.6	10.43%	-0.27%
Part-time	67.6	58.6	76.3	30.20%	12.87%
Unemployed	267.3	288.2	248.2	-13.88%	-7.15%
Unemployment rate	25.43%	29.00%	23.89%	-5.11	-1.54
<b>Agriculture, Livestock and Forestry</b>					
Active	1,008.1	953.1	999.1	4.83%	-0.89%
Employed	745.4	668.3	755.3	13.02%	1.33%
o/total economy	4.4%	4.0%	4.5%	0.53	0.11
Unemployed	262.7	284.8	243.8	-14.40%	-7.19%
Unemployment rate	26.06%	29.88%	24.40%	-5.48	-1.66
<b>Fisheries and aquaculture</b>					
Active	43.2	40.7	39.9	-1.97%	-7.64%
Employed	38.6	37.3	35.5	-4.83%	-8.03%
o/total economy	0.23%	0.22%	0.21%	-0.01	-0.02
Unemployed	4.6	3.4	4.4	29.41%	-4.35%
Unemployment rate	10.65%	8.35%	11.03%	2.67	0.38
<b>Food, Beverages and Tobacco Industry</b>					
Active	503.1	508.1	515.2	1.40%	2.41%
Employed	441.8	444.4	449.4	1.13%	1.72%
o/total economy	2.6%	2.6%	2.7%	0.04	0.08
Unemployed	61.3	63.7	65.8	3.30%	7.34%
Unemployment rate	12.18%	12.54%	12.77%	0.23	0.59

Source: Labour Force Survey, Spain Statistics Institute (INE)

NOTA: The variations between two percentages are expressed in differential points

The LFS only classifies into a specific economic sector to unemployed people which have left their job since 12 months or less. Therefore, sectorial unemployment rates are not comparable to general unemployment rate.

Unemployed people. Interannual variation (%), 2007-13. Source: LFS, INE



Social Security affiliation in primary sector	2011	2012	2013	Var. (%) 2013/12
	people affiliated (average)			
General Scheme	54,852	50,759	50,488	-0.5%
Special Agricultural System	820,173	810,119	748,288	-7.6%
Special Scheme: Self-employed	275,402	269,337	265,995	-1.2%
Special Scheme: Marine workers	38,485	37,932	36,792	-3.0%
Primary Sector	1,188,912	1,168,147	1,101,563	-5.7%
Total Economy	17,326,280	16,738,550	16,227,662	-3.1%
<b>Registered Unemployment average number of people</b>				
	2011	2012	2013	Var. (%) 2013/12
Agriculture, livestock	125,574	150,659	182,257	21.0%
Forestry	10,749	12,608	13,265	5.2%
Fisheries and aquaculture	5,081	5,545	6,006	8.3%
Primary Sector	141,404	168,811	201,528	19.4%
Food Industry	76,511	82,973	85,392	2.9%
Beverages	6,971	7,762	8,344	7.5%
Tobacco	1,124	886	833	-6.0%
Food, Beverages and Tobacco Ind.	84,606	91,620	94,568	3.2%
TOTAL	4,257,160	4,720,404	4,845,302	2.6%

Source: Ministry of Employment and Social Security. [www.empleo.gob.es](http://www.empleo.gob.es)

Annual Averages calculated from monthly data

**3. PRICES.** In 2013, the Consumer Price Index (CPI) closes with stability in the general prices as well as in food and non-alcoholic beverages prices (1.2% in December compared to 4.4% in August). The index of prices received by farmers raises by 11.8% interannual, whereas the price paid for goods currently consumed index falls by 3.9%.

CONSUMER PRICE INDEX (CPI) % Interannual variation rate		2011	2012	2013												2012	2013	f/ Previous year (p.p)
		December	August	E	F	M	A	My	J	Jl	A	S	O	N	D	Average		
National 2006 base year	General CPI	2.4	2.9	2.7	2.8	2.4	1.4	1.7	2.1	1.8	1.5	0.3	-0.1	0.2	0.3	2.5	1.4	-1.1
	Food and non-alcoholic beverages	2.1	3.0	3.2	2.8	2.6	2.6	3.4	3.7	4.4	4.4	2.5	1.6	1.2	1.2	2.3	2.8	0.5
	Unprocessed foods	0.7	3.9	4.3	3.1	2.5	2.7	4.9	5.3	7.4	7.6	2.8	0.9	0.4	0.6	2.3	3.5	1.2
	Processed foods	2.7	2.7	2.7	2.8	2.7	2.7	2.7	2.9	2.9	2.8	2.4	2.0	1.7	1.6	2.3	2.5	0.2
	All items exc. energy and unprocessed food	1.5	2.1	2.2	2.3	2.3	1.9	2.0	2.0	1.7	1.6	0.8	0.2	0.4	0.2	1.6	1.5	-0.1
	Liquid and solid fuels	10.6	5.7	4.2	5.1	1.4	-1.2	-0.1	3.8	2.6	-1.1	-2.3	-2.5	0.4	1.7	8.8	1.0	-7.8
HCPI 2005 base year	EU27 - Global	3.0	2.3	2.1	2.0	1.9	1.4	1.6	1.7	1.7	1.5	1.3	0.9	1.0	1.0(p)	2.6	1.6	-1.0
	EU27 - Food and non-alcoholic beverages	3.2	3.4	3.5	2.8	2.7	3.0	3.4	3.2	3.3	2.9	2.3	1.6	1.2	1.2(p)	3.0	2.7	-0.3
	SPA Harmonised - Global	2.4	3.0	2.8	2.9	2.6	1.5	1.8	2.2	1.9	1.6	0.5	0.0	0.3	0.3	2.0	1.5	-0.5
	SPA H.- Food and non-alcoholic beverages	2.0	3.0	3.2	2.8	2.6	2.6	3.4	3.7	4.4	4.4	2.5	1.6	1.2	1.2	2.1	2.8	0.7

Source: INE and EUROSTAT (p): Provisional; (p.p): percentage points

Price Received Index				
Annual Moving Average 2005 base year = 100	2011	2012	2013	% var. August 2013/12
	August			
<b>GLOBAL</b>	101.0	104.5	116.9	11.8%
<b>Plant Products</b>	95.9	94.8	111.7	17.8%
<b>Agricultural products</b>	96.2	95.0	112.4	18.3%
Cereals	149.7	157.5	165.0	4.8%
Tubers	135.1	111.1	187.5	68.8%
Citrus fruits	91.3	78.9	107.6	36.4%
Non citrus fruits	111.4	109.0	93.7	-14.0%
Vegetables	83.5	74.8	133.9	78.9%
Wine and grape must	90.8	113.4	115.4	1.7%
Olive oil	61.6	57.0	162.9	186.1%
<b>Forestry products</b>	84.4	83.9	77.4	-7.8%
<b>Animal Products</b>	108.6	119.4	124.8	4.5%
Cattle	116.3	129.6	137.0	5.7%
Sheep	102.5	110.5	107.0	-3.1%
Pigs	105.6	111.6	127.4	14.1%
Poultry	122.9	141.1	139.1	-1.4%
Milk	100.5	102.4	107.1	4.6%
Eggs	117.4	170.9	147.0	-14.0%

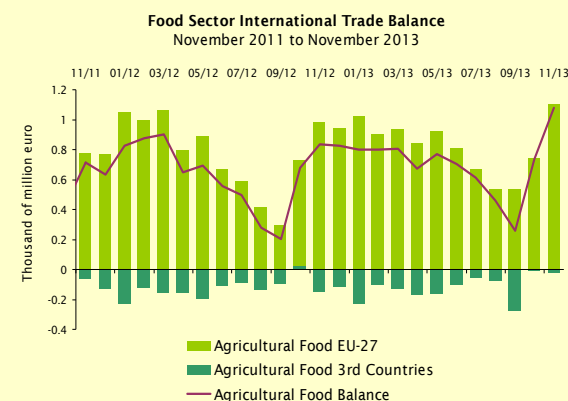
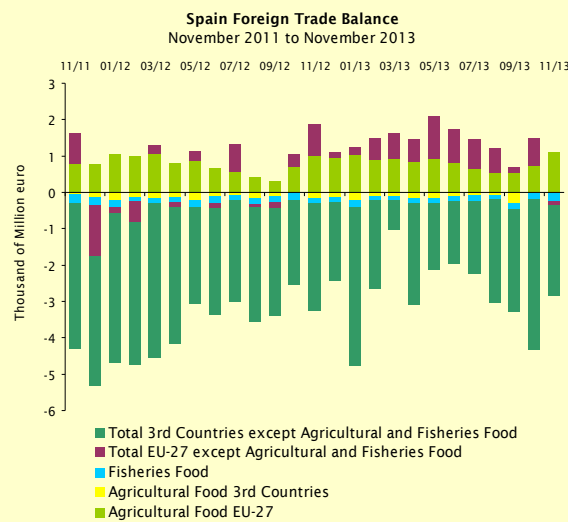
Price Paid Index				
Año 2005 = 100	2012		2013	% Var. August 2013/12
	ANNUAL	August	August	
<b>Goods currently consumed</b>	139.5	143.2	137.5	-3.9%
Seeds and saplings	116.0	116.1	115.2	-0.8%
Fertilisers	169.0	170.9	163.8	-4.2%
Feeding stuffs	142.9	148.8	138.1	-7.2%
Fuel	164.1	166.7	161.3	-3.2%
Electricity	167.7	173.7	172.3	-0.8%
Lubricants	132.6	132.3	134.3	1.5%
<b>Investment goods</b>	123.0	122.9	125.5	2.1%
Farm machinery	120.7	120.5	123.9	2.9%
<b>Global Index of agricultural wages</b>				
(Year 1985=100)	372.5	370.7	374.5	1.0%

Fuente: S.G.Statistics, MAGRAMA

**4. FOREIGN TRADE.** Year 2013 is aimed at reaching another positive record, with exports in the last moving year of 37,854 million € (+4.2% from previous year) and a positive balance of 7,796 million € (+44%)

Agri-food foreign trade development Million euros		Moving Year	Moving Year	November 2013	Var.(%) november 2013/12
		Dec11- Nov12	Dec12- Nov13		
Total International Trade - Spain	Exp	225,425	233,740	19,319	-2.36
All Chapters of CN (Combined Nomenclature)	imp	260,101	249,191	21,078	-1.32
	Balance	-34,677	-15,451	-1,759	▼ -11,78
Agricultural and Fisheries Sector (A+B)	Exp	36,329	37,854	3,275	-5.26
	imp	30,896	30,059	2,388	-13.91
	Balance	5,432	7,796	887	▲ 29,85
A. Food Subsector (a+b)	Exp	34,715	36,127	3,142	-5.45
	imp	29,504	28,654	2,274	-14.50
	Balance	5,211	7,473	868	▲ 30,87
a. Agricultural Food (a1+a2)	Exp	31,731	33,221	2,917	-4.29
	imp	24,465	23,920	1,836	-17.24
	Balance	7,266	9,301	1,081	▲ 30,36
a1. Non Processed Agricultural Food Sector	Exp	11,877	13,051	1,234	-2.67
	imp	8,027	7,536	587	-27.76
	Balance	3,850	5,515	647	▲ 42,05
a2. Processed Agricultural Food Sector	Exp	19,854	20,171	1,684	-5.44
	imp	16,438	16,384	1,250	-11.17
	Balance	3,416	3,786	434	▲ 16,11
b. Fisheries Food (b1+b2)	Exp	2,984	2,906	225	-18.28
	imp	5,039	4,734	438	-0.71
	Balance	-2,055	-1,828	-213	▼ -28,35
b1. Non Processed Fisheries Food Sector	Exp	506	494	35.0	-22.22
	imp	987	1017	85.8	5.55
	Balance	-481	-523	-50.8	▼ -40,01
b2. Processed Fisheries Food Sector	Exp	2,478	2,412	190	-17.50
	imp	4,052	3,717	352	-2.13
	Balance	-1,575	-1,305	-162	▼ -25,09
B. Non Food Subsector (c+d+e)	Exp	1633	1727	133	-0.62
	imp	1447	1405	113	0.00
	Balance	186.0	322	19.1	▼ -4,12
c. Agricultural excluding food	Exp	1,177	1,263	92	-5.13
	imp	912	884	61.7	-6.65
	Balance	265	379	29.9	▼ -1,85
d. Fisheries excluding food	Exp	56.2	45.7	3.57	-0.1
	imp	23.0	25.3	2.21	72.46
	Balance	33.2	20.5	1.36	▼ -40,73
e. Forestry	Exp	400	418	37.4	12.4
	imp	512	495	49.6	7.49
	Balance	-112	-77.0	-12.20	▲ 5,26

▼ Negative evolution compared to previous year  
▲ Positive evolution compared to previous year



TARIC: integrated Community Tariff of the EU countries.

Data source: Compiled by authors, based on information supplied by the Secretary of State for Trade (Ministry of Economy).

**5. AGRICULTURAL PRODUCTION. Crops:** Recovering of productions after the 2012's drought. Significant rises in production of grain cereals, vineyard and olive oil. **Livestock:** Production fall in all the species in the first six months of 2013, important reductions in slaughters of sheep and goats.

	Surface (thousand hectares)					Production (thousand tons)						
	Yearbook				Oct. Preview. 2013		Yearbook				Sept. Preview. 2012	
	2011	A = Average 06-08	B = Average 09-11	Var. (%) B / A	2012 (p)	2013 (a)	2011	A = Average 06-08	B = Average 09-11	Var. (%) B / A	2012 (p)	2013 (a)
Grain Cereals	5,985.5	6,429.7	6,034.2	-6.2%	6,074.8	6,180.2	22,094.5	22,605.3	19,952.9	-11.7%	17,380.7	25,078.5
Common wheat	378.1	519.7	469.3	-9.7%	410.5	342.5	900.4	1,351.7	1,100.6	-18.6%	442.6	904.0
Durum wheat	1,616.6	1,407.4	1,435.8	2.0%	1,758.9	1,779.4	5,976.3	4,911.4	4,773.6	-2.8%	5,092.9	7,597.9
Barley	2,700.7	3,304.2	2,870.3	-13.1%	2,676.2	2,769.1	8,287.1	10,450.5	7,912.5	-24.3%	5,976.9	10,057.9
Maize	369.3	359.0	344.4	-4.1%	386.9	440.9	4,199.9	3,561.4	3,680.1	3.3%	4,234.6	4,800.1
Pulses	530.3	269.0	429.3	59.6%	449.2	286.6	520.3	300.7	440.5	46.5%	353.5	456.8
Dried peas	241.3	131.1	201.0	53.4%	163.8	122.9	253.4	162.5	217.6	33.9%	136.3	177.5
Potatoes	79.9	84.9	81.0	-4.6%	73.3	71.1	2,455.1	2,379.9	2,490.7	4.7%	2,205.4	2,188.1
Sugar beet	44.9	68.7	46.0	-33.0%	38.9	31.3	4,188.5	5,969.0	3,983.0	-33.3%	3,482.4	2,747.1
Cotton	67.1	60.1	63.0	4.8%	69.8	64.0	182.8	109.3	125.7	15.0%	191.6	145.4
Sunflower	862.9	651.4	798.8	22.6%	761.2	868.2	1,090.2	756.0	935.4	23.7%	619.0	1,028.4
Alfalfa	260.5	240.4	259.2	7.8%	258.1	249.9	11,474.0	11,965.7	11,441.5	-4.4%	10,492.9	10,936.8
Vegetables	351.1	378.7	364.8	-3.7%	330.9	327.1	12,972.6	13,339.7	13,913.7	4.3%	12,835.3	-
Apple tree	29.5	34.5	30.2	-12.5%	-	-	670.3	677.8	639.5	-5.6%	558.9	574.9
Pear tree	24.7	29.9	25.3	-15.3%	-	-	502.4	561.5	481.0	-14.3%	400.6	426.6
Apricot tree	16.3	16.2	16.1	-0.2%	-	-	86.9	118.3	87.1	-26.4%	119.4	129.5
Peach tree	44.2	48.6	44.4	-8.6%	-	-	802.4	975.3	931.5	-4.5%	747.2	809.7
Almond tree	507.4	542.7	520.4	-4.1%	-	-	211.2	227.0	234.6	3.3%	215.1	157.1
Orange tree	138.8	126.2	136.1	7.8%	-	-	2,818.9	3,182.5	2,867.7	-9.9%	2,929.9	3,394.1
Mandarin	108.4	106.2	107.2	1.0%	-	-	2,117.1	2,241.1	2,104.7	-6.1%	-	-
Vineyard for table grapes	14.5	18.7	15.6	-16.4%	-	-	243.4	294.2	244.0	-17.0%	229.8	261.6
Vineyard (For processing)	896.2	1,039.9	937.0	-9.9%	-	-	5,569.6	5,878.8	5,577.2	-5.1%	5,073.2	6,434.4
Vineyard (Thousands hl wine+grape must)	---	---	---	---	---	---	38,453.5	42,763.2	39,944.0	-6.6%	35,778.0	46,648.2
Olive tree for olive oil	2,257.4	2,219.8	2,235.5	0.7%	-	-	1,567.5	1,110.0	1,448.9	30.5%	611.3	1,545.0
Olive tree for table olive	162.2	165.7	163.7	-1.2%	-	-	467.4	410.2	490.8	19.6%	455.3	498.4

(p): Provisional / (a): preview

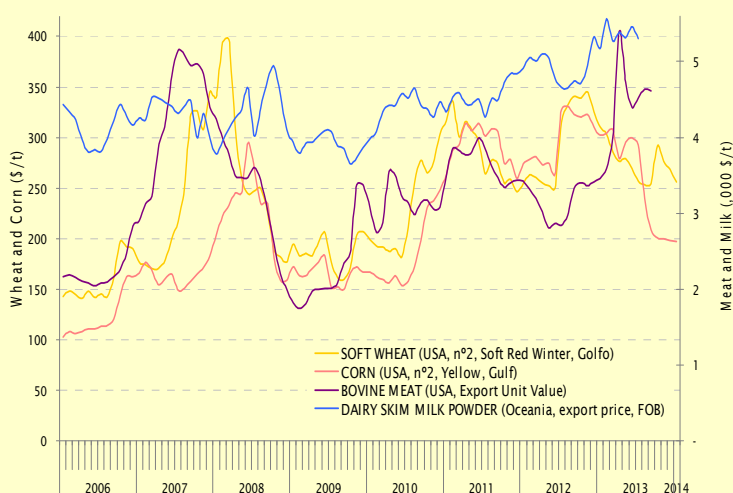
	Number of heads (thousand)						Annual Animal Slaughter (tons) Milk production (miles t.) and eggs (thousand dozen) Aggregated data for year's 1st half					
	Yearbook					Var. (%) B / A	2012	2013	Var. (%) 2013 / 12	A = Average 08 - 10	B = Average 11 - 13	Var. (%) B / A
	2011	2012	Var. (%) 12 / 11	A = Average 07 - 09	B = Average 10 - 12							
Cattle	5,923	5,813	-1.9%	6,229	5,937	-4.7%	284,991	283,812	-0.4%	303,908	288,531	-5.1%
Dairy cows / milk collected	798	827	3.6%	873	823	-5.7%	3,098	3,054	-1.4%	2,980	3,040	2.0%
Sheep	17,003	16,339	-3.9%	20,622	17,298	-16.1%	64,508	59,774	-7.3%	66,124	64,075	-3.1%
Goats	2,693	2,637	-2.1%	2,928	2,745	-6.3%	4,563	4,064	-10.9%	4,130	4,517	9.4%
Pigs	25,634	25,250	-1.5%	25,810	25,529	-1.1%	1,776,062	1,745,933	-1.7%	1,721,220	1,747,520	1.5%
Poultry (Broilers and others)	703,727	703,865	0.0%	694,215	700,886	1.0%	683,776	680,364	-0.5%	657,017	686,293	4.5%
Poultry (Laying hens) / Eggs	49,494	43,643	-11.8%	50,361	48,082	-4.5%	---	---	---	n/d	n/d	n/d

Data source: SG Statistics. From "Statistical yearbook 2012" and "Advanced report on Agricultural Areas and Production, October 2013" (data from these two sources are not directly comparable as they include different crops). Monthly Statistics of milk collected (in tonnes of milk). Monthly Statistical Bulletin (Slaughter survey). --- / n/d: Not Available

**6. INTERNATIONAL MARKETS. Year 2013 was characterized by cereal price drops, meat and milk prices raises and rude oil price stability.**

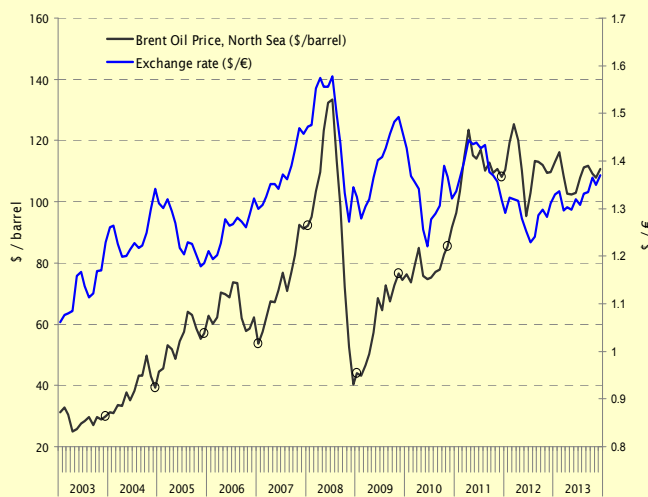
**International Commodity Prices**

Monthly average (\$/t.). Data Source: Commodity Prices FAO  
<http://www.fao.org/es/esc/prices/PricesServlet.jsp?lang=en>



**Exchange rate \$/€ and Crude Oil Price**

Data source: BCE y MEH, SERSIE Series  
<http://serviciosweb.meh.es/APPS/DGPE/sersie/sersie.aspx>



**7. AGRICULTURAL POLICY AND DEBT LEVEL. Common Agricultural Policy:** In budgetary year of 2013, the total expenditure in the first pillar in Spain was equal to 5,935 million euro, of which, the 76.4% were "decoupled direct aids", the 11.9% were "other direct aids" and the 10% was dedicated to "intervention in markets". **Debt Level:** The debt level of the Spanish economy continues to drop, there were important falls in the last year: -6.8% in the manufacturing of food, beverages and tobacco, -10.2% in the agricultural sector and -19.5% in the total of productive activities.

EXPENSES AND BUDGET OF EAGF SPAIN AND EU Budgetary year of 2012, 2013 and 2014 Million €	TOTAL EXPENDITURE						BUDGET		
	Budgetary Year 2012			Budgetary Year 2013			Budgetary Year 2014		
	ESPAÑA	UE	% Esp / UE	ESPAÑA	UE	% Esp / UE	ESPAÑA	UE	% Esp / UE
<b>CAP support</b>	<b>0.0</b>	<b>7.2</b>	<b>0.0%</b>	<b>0.0</b>	<b>6.6</b>	<b>0.0%</b>			
Cereals	0.0	42.0	0.0%	0.0	0.1	0.0%	0.0	0.0	0.0%
Rice	0.0	0.0	0.0%	0.0	0.0	0.0%	0.0	0.0	0.0%
Restitution for products out of annex I	0.0	8.9	0.0%	0.0	4.9	0.0%	0.0	4.0	0.0%
Food aid programmes	86.3	515.1	16.8%	85.6	491.5	17.4%	0.0	0.0	0.0%
Sugar	0.0	-0.2	0.0%	0.0	-0.1	0.0%	0.0	0.0	0.0%
Olive oil	12.4	55.4	22.4%	17.2	60.9	28.2%	0.0	45.3	0.0%
Textiles crops	6.1	25.0	24.4%	6.1	17.1	35.6%	6.1	6.2	98.9%
Fruits and vegetables	180.4	1,071.0	16.8%	183.4	1,138.1	16.1%	184.5	676.7	27.3%
Viticulture Sector	218.1	1,072.3	20.3%	210.1	1,044.2	20.1%	210.3	1,085.0	19.4%
Promotion	4.1	47.9	8.6%	5.2	51.5	10.1%	6.4	61.4	10.4%
Other plant products	112.5	329.1	34.2%	77.2	227.6	33.9%	83.6	240.4	34.8%
Milk and dairy products	-16.6	66.9	--	0.5	70.3	0.7%	1.0	81.1	1.2%
Beef	0.6	37.1	1.6%	0.2	6.5	3.1%	0.0	1.0	2.0%
Sheep and goat meat	0.0	0.0	0.0%	0.0	0.0	0.0%	0.0	0.0	0.0%
Other (pigs, eggs, poultry or beekeeping)	7.2	133.9	5.4%	5.0	80.5	6.2%	5.5	32.1	17.1%
Sugar restructuring fund	21.4	109.6	19.5%	0.0	0.0	0.0%	0.0	0.0	0.0%
<b>Intervention in markets</b>	<b>632.5</b>	<b>3,514.0</b>	<b>18.0%</b>	<b>590.6</b>	<b>3,193.2</b>	<b>18.5%</b>	<b>497.4</b>	<b>2,233.2</b>	<b>22.3%</b>
Decoupled direct aids	4,378.3	37,665.4	11.6%	4,532.4	38,842.1	11.7%	4,432.1	38,252.0	11.6%
Other direct aids	857.7	3,212.8	26.7%	704.9	2,816.0	25.0%	665.3	2,770.2	24.0%
Additional amounts of aid	0.0	0.0	0.0%	0.0	0.2	0.0%	0.0	0.0	0.0%
<b>Direct Aids</b>	<b>5,236.0</b>	<b>40,878.2</b>	<b>12.8%</b>	<b>5,237.2</b>	<b>41,658.3</b>	<b>12.6%</b>	<b>5,097.4</b>	<b>41,022.2</b>	<b>12.4%</b>
Rural development (before EAGGF's guarantee)	0.0	-2.7	0.0%	0.0	-1.0	0.0%			
Audits	0.3	110.0	0.3%	107.6	119.4	90.1%			
CAP's coordination	0.0	43.1	0.0%	0.0	26.3	0.0%			
<b>1er PILLAR of CAP</b>	<b>5,868.8</b>	<b>44,549.8</b>	<b>13.2%</b>	<b>5,935.4</b>	<b>45,002.7</b>	<b>13.2%</b>	<b>5,594.8</b>	<b>43,255.3</b>	<b>12.9%</b>
Fishing	0.0	29.9	0.0%	0.0	27.2	0.0%			
Health y Consumer Protection	0.0	249.7	0.0%	0.0	239.2	0.0%			
<b>TOTAL EXPENDITURES INCURRED BY EAGF</b>	<b>5,868.8</b>	<b>44,829.4</b>	<b>13.1%</b>	<b>5,935.4</b>	<b>45,269.1</b>	<b>13.1%</b>	<b>5,594.8</b>	<b>43,255.3</b>	<b>12.9%</b>
Contributions, settlements and rates	-83.7	-907.6	9.2%	-124.4	-829.0	15.0%			
<b>TOTAL EAGF</b>	<b>5,785.1</b>	<b>43,921.8</b>	<b>13.2%</b>	<b>5,810.9</b>	<b>44,440.1</b>	<b>13.1%</b>			

Debt Level in Primary Sector (S.P) and in Food, Beverages and Tobacco Industry (FBT)

Item	Quarter	TOTAL	P.S (*)	FBT
Total Loan (million €)	III-2011	951,096	20,049	22,311
	III-2012	886,962	18,898	21,303
	III-2013	713,773	16,976	19,856
Loan Variation	III-13/III-12	-19.5%	-10.2%	-6.8%
	III-13/II-13	-2.3%	-1.3%	-3.2%
Doubtful loans (million €)	III-2011	99,562	1,163	1,306
	III-2012	146,866	1,616	1,740
	III-2013	141,621	2,176	2,662
Nonperforming Loan (NPL) Ratio	III-2011	10.47%	5.80%	5.85%
	III-2012	16.56%	8.55%	8.17%
	III-2013	19.84%	12.82%	13.41%
% Loan / Total Productive Activities	III-2011		2.1%	2.3%
	III-2012		2.1%	2.4%
	III-2013		2.4%	2.8%

▲ Source: Bank of Spain;

(\*) Includes agriculture, livestock, hunting and forestry. Fisheries and Aquaculture are not included

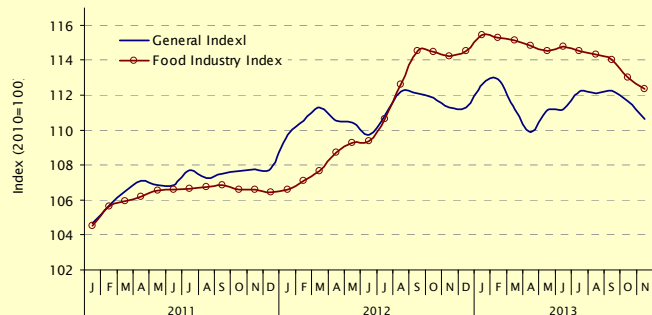
◀ Source: FEGA (Agricultural Guarantee Spanish Fund, Ministry of Agriculture, Food and Environment

**8. AGRO-FOOD INDUSTRY.** The agro-food productivity in 2012 raised by 4,1% from 2011, staying at 12,6% over the productivity of the rest of the Spanish industry.

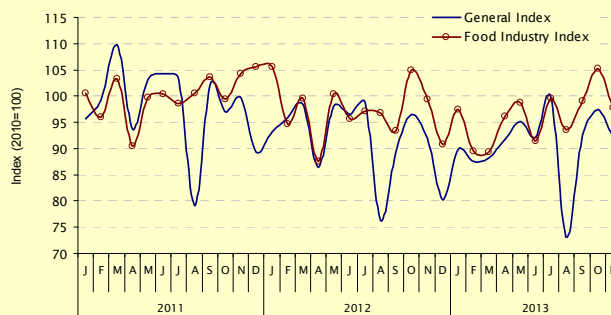
INCOME AND EXPENDITURE STRUCTURES OF THE FOOD, BEVERAGE AND TOBACCO INDUSTRY									
Million € / people / Thousand hours	Food, Beverages & Tobacco Industry				Rest of Industry Sector				Total
Main indicators	2012	% FBT/ Total I.	% total revenue	%Var 12/11	2012	% Resto/ Total I.	% total revenue	%Var 12/11	2012
Employed people	355,574	18.5%	87.1%	-1.5%	1,566,698	81.5%	72.4%	-7.2%	1,922,272
Working time (,000 hours)	618,762	18.9%	8.9%	-2.3%	2,659,059	81.1%	18.0%	-7.6%	3,277,821
Net amount turnover	102,859	18.0%	1.8%	1.0%	468,125	82.0%	5.4%	-1.1%	570,984
Change in commodities stock	286	31.0%	3.2%	4.2%	-651	69.0%	14.6%	-167.4%	-366
Change in products stock	371	191.7%	7.2%	-37.6%	-177	-91.7%	5.4%	-112.7%	193
Purchases and outsourced jobs by companies	70,613	18.4%	1.8%	3.0%	312,161	81.6%	5.4%	-0.9%	382,774
Tangible assets investments	3,278	15.5%	1.5%	-3.7%	17,906	84.5%	13.1%	4.2%	21,184
<b>Operating Revenues</b>	<b>2012</b>	<b>% IABT/ Total I.</b>	<b>% total revenue</b>	<b>%Var 12/11</b>	<b>2012</b>	<b>% Resto/ Total I.</b>	<b>% total revenue</b>	<b>%Var 12/11</b>	<b>2012</b>
Product net sales	91,143	20.8%	87.1%	1.7%	347,764	79.2%	72.4%	-3.7%	438,907
Good net sales	9,339	9.8%	8.9%	-5.0%	86,344	90.2%	18.0%	14.6%	95,683
Service provision	2,376	6.5%	2.3%	-1.4%	34,018	93.5%	7.1%	-7.1%	36,394
Company Work incorporated in its asset	184	7.8%	0.2%	32.7%	2,165	92.2%	0.5%	3.6%	2,350
Subsidies, grants and bequests	407	16.2%	0.4%	-22.1%	2,109	83.8%	0.4%	-28.7%	2,516
Other operating revenues	1,140	12.7%	1.1%	-5.7%	7,867	87.3%	1.6%	-16.0%	9,007
<b>Total operating revenues</b>	<b>104,589</b>	<b>17.9%</b>	<b>100.0%</b>	<b>0.8%</b>	<b>480,267</b>	<b>82.1%</b>	<b>100.0%</b>	<b>-1.5%</b>	<b>584,857</b>
<b>Operating Expenses</b>	<b>2012</b>	<b>% IABT/ Total I.</b>	<b>% total expenses</b>	<b>%Var 12/11</b>	<b>2012</b>	<b>% Resto/ Total I.</b>	<b>% total expenses</b>	<b>%Var 12/11</b>	<b>2012</b>
Net purchases of raw materials	54,617	21.8%	54.4%	4.3%	196,194	78.2%	42.6%	-3.5%	250,811
Net purchases of supplying	7,008	22.8%	7.0%	1.7%	23,720	77.2%	5.1%	-10.9%	30,728
Net purchase in merchandise goods	7,215	9.7%	7.2%	-3.9%	67,295	90.3%	14.6%	14.6%	74,511
Outsourced jobs to other companies	1,772	6.6%	1.8%	-2.3%	24,952	93.4%	5.4%	-5.1%	26,724
Labor cost	10,819	15.2%	10.8%	-2.7%	60,289	84.8%	13.1%	-5.2%	71,108
Supplementary/other services	14,983	20.1%	14.9%	-1.1%	59,412	79.9%	12.9%	-1.8%	74,395
Other operating expenses	4,058	12.3%	4.0%	-9.0%	28,877	87.7%	6.3%	1.1%	32,935
<b>Total operating expenses</b>	<b>100,472</b>	<b>17.9%</b>	<b>100.0%</b>	<b>1.2%</b>	<b>460,740</b>	<b>82.1%</b>	<b>100.0%</b>	<b>-1.5%</b>	<b>561,212</b>
<b>Productivity (€/person; €/hour)</b>	<b>2012</b>	<b>% IABT/ Total I.</b>	<b>% total revenue</b>	<b>%Var 12/11</b>	<b>2012</b>	<b>% Resto/ Total I.</b>	<b>% total revenue</b>	<b>%Var 12/11</b>	<b>2012</b>
Product net sales / employed person	256,327	112.3%	87.1%	3.3%	221,973	97.2%	72.4%	3.7%	228,327
Product net sales / working time	147.3	110.0%	8.9%	4.1%	130.8	97.7%	18.0%	4.2%	133.9

Source: Industrial Business Survey, INE

Industrial Product Price Index (IPRI), 2010=100  
General Index and Food Industry Index



Industrial Production Index (IPI) 2010 =100  
General Index and Food Industry Index



Source: INE



**12. FORESTRY AND WOOD INDUSTRY.** *The importance of the Forestry & Logging and Wood & Paper Manufacturing sector in 2009 was 0.68% (0.95% in 2005). This fall is parallel to a decrease in the employment in this sector. Nevertheless, the paper manufacturing industry is maintaining its value and the employment, in contrast with this trend.*

Forestry & Logging and Wood & Paper Manufacturing Economic Accounts

	2005	2006	2007	2008	2009 (P)	Average 2005 a 09
GVA Forestry sector and Wood, Cork and Paper Manufacturing	7,759	8,149	8,562	8,205	6,637	7,862
% VAB Forestry and Manuf./Total GVA	0.95%	0.93%	0.91%	0.82%	0.68%	0.86%
% VAB Forestry and Manuf./GDP	0.85%	0.83%	0.81%	0.75%	0.63%	0.78%
Forestry and Logging (NACE 02)						
Output	1,769	1,841	1,925	1,644	1,192	1,674
Intermediate Consumption	166	175	189	192	180	180
GVA	1,603	1,666	1,736	1,452	1,012	1,494
%o/agriculture GVA	6.46%	7.16%	6.72%	5.81%	4.38%	6.10%
%s/Total GVA	0.20%	0.19%	0.18%	0.15%	0.10%	0.16%
Manufacture of wood and products of wood and cork (NACE 16)						
Output	10,790	11,564	12,087	10,636	7,711	10,558
Intermediate Consumption	7,762	8,267	8,661	7,252	5,173	7,423
GVA	3,028	3,297	3,426	3,384	2,538	3,135
%o/Industry Sector GVA	2.05%	2.11%	2.09%	2.01%	1.70%	1.99%
%o/Total GVA	0.37%	0.38%	0.36%	0.34%	0.26%	0.34%
Manufacture of paper and paper products (NACE 17)						
Output	11,268	12,106	12,910	12,873	10,772	11,986
Intermediate Consumption	8140	8920	9510	9504	7685	8,752
GVA	3,128	3,186	3,400	3,369	3,087	3,234
%o/Industry Sector GVA	2.11%	2.04%	2.07%	2.00%	2.07%	2.06%
%o/Total GVA	0.38%	0.36%	0.36%	0.34%	0.32%	0.35%

Source: INE, National Spanish Accounts

Labour Force Survey  
Forestry & Logging and Wood & Paper Manufacturing

Thousand people	2010	2011	2012	2013	Var.(%) 2013/12
Forestry and Logging (NACE 02)					
Active	39.1	40.6	34.6	31.0	-10.4%
Employed	31.0	30.7	24.2	23.1	-4.5%
o/total economy	0.17%	0.17%	0.14%	0.14%	0.00
Unemployed	8.1	9.9	10.4	7.9	-24.0%
Unemployment rate	20.7%	24.4%	30.1%	25.4%	-4.7
Manufacture of wood and products of wood and cork (NACE 16)					
Active	73.9	75.9	70.7	58.8	-16.8%
Employed	67.3	69.9	60.3	51.3	-14.9%
o/total economy	0.36%	0.39%	0.35%	0.31%	0.04
Unemployed	6.6	5.9	10.4	7.5	-28.1%
Unemployment rate	8.9%	7.8%	14.8%	12.8%	-2.0
Manufacture of paper and paper products (NACE 17)					
Active	50.0	42.5	44.0	45.8	4.2%
Employed	45.3	40.1	40.7	42.7	4.9%
o/total economy	0.25%	0.22%	0.24%	0.25%	0.01
Unemployed	4.7	2.4	3.3	3.1	-5.3%
Unemployment rate	9.4%	5.5%	7.4%	6.8%	-2.06

NOTE: The variations between two percentages are expressed in differential points

The LFS only classifies into a specific economic sector to unemployed people which have leaved their job since 12 months or less. Therefore, sectorial unemployment rates are not comparable to general unemployment rate.

(\*): Excluding furniture, manufacturing of articles of straw and plaiting materials

## 13. ENVIRONMENT

WATER	Units	2007	2008	2009	2010	2011	2012	2013	2014	
Average annual rainfall: Spanish peninsula	l/m <sup>2</sup>	608	579	662	789	542	535	717		
Total water storage in reservoirs (December)	Hm <sup>3</sup>	22,466	25,915	31,945	41,427	34,536	30,872	36,912	41,881	28th january
% of water storage in reservoirs (1)	%	41.5	47.7	58	74.5	62.1	55.8	66.7	75.7	28th january
Treated sewage water	m <sup>3</sup> /inhab day	0.281	0.273	0.279	0.290	0.292				---
CLIMATE CHANGE	Units	2007	2008	2009	2010	2011	2012	2013	2014	
Greenhouse gas emissions (2)	Kt CO <sub>2</sub>	432,009	402,186	364,406	351,939	351,678	346,062.0			
Greenhouse gas emissions /1990 (2) (3)	%	49.1	38.8	25.8	21.5	21.4	19.4			
Greenhouse gas emission allowances. Price. (EUA) (4)	€/t CO <sub>2</sub>	---	22.2	13.1	14.3	12.8	7.3	4.5		
Price of carbon credits (4)	€/t CO <sub>2</sub>	---	19.7	12.5	12.6	9.9	3.0	0.4		
Electricity production from renewable energy sources	GWh	62,158	63,947	74,675	98,529	88,225	88,264	113,136	11,359	29th january
Electricity production from hydraulic energy (5)	GWh	30,351	25,876	29,321	31,797	32,779	24,125	40,988	4,324	29th january
Electricity production from wind power	GWh	25,861	31,394	36,188	43,088	42,224	48,134	54,580	6,207	29th january
Electricity net generation (6)	GWh	271,442	278,107	263,258	273,337	264,936	268,616	260,395	21,356	29th january
Renewable energy consumption (% s/ primary energy)	%	6.8	7.4	9.4	11.6	11.3	12.3	15.5		september 2013
Biofuel consumption (Until 2006, ktep)	,000 tonnes	491	727	1,265	1,711	1,989	2,269	1,128		jan to nov./13
BIODIVERSITY	Units	2007	2008	2009	2010	2011	2012	2013	2014	
Natura 2000 network and nature protected areas (marine and earth) (7)	,000 ha	14,376	14,602	15,071	15,090	15,173	15,178		---	---
Natura 2000 network + nature protected areas/ Total Spain Area (%)	%	26.8	27.2	27.7	27.7	27.8	27.9		---	---
Total burnt forest area by forest fires (8)	hectare	86,122	50,322	120,094	54,770	84,490	209,855	55,686		Bulletin 12/2013
% Burnt forest area by forest fires	%	0.311	0.182	0.434	0.198	0.305	0.759	0.202		Bulletin 12/2013
WASTE GENERATION	Units	2007	2008	2009	2010	2011	2012	2013	2014	
Municipal waste per person per day	kilogramme	583	556	547	535	531				---
Collected municipal waste	,000 tonnes	26,238	26,030	25,108	23,774	22,997			---	---
COASTLINE	Units	2007	2008	2009	2010	2011	2012	2013	2014	
Accumulated annual demarcation of the coastal zone	Kilometer	7,586	8,152	8,920	9,509	9,823	9823.9	9875.0	---	---
OTHERS	Units	2007	2008	2009	2010	2011	2012	2013	2014	
Environmental interventions of Civil Guard Nature Service	number	139,535	129,289	134,411	119,950	136,467	144,235	144,940	---	---

- (1) Percentage of total capacity  
 (2) GHG inventory, MAGRAMA  
 (3) 1990, Kyoto Protocol base year (289.773 kt CO<sub>2</sub>)  
 (4) Prices in SENDECO2 (30-days average)  
 (5) Hydraulic + Special Regime Hydraulic

- (6) Net generation: Energy production from alternator terminals, except the energy consumed by auxiliary services and energy losses in transformers  
 (7) From 2007 inclusive, includes nature protected areas data  
 (8) Monthly Statistics Report. MAGRAMA.

\*: provisional

Data Sources:

Compiled by the authors from SG Statistics, MAGRAMA, Hydrological Bulletin by MAGRAMA, INE (Environmental Profile of Spain), Red Eléctrica de España, S.A, State Meteorology Agency (AEMET), European Environment Agency, S.G. Biodiversity, Institute for Energy Diversification and Saving (IDAE), Corporation of Strategic Reserves of Oil-based products (CORES), SEPRONA.

---: Data not available